

# Anti-GSK3B Antibody (R3M09)

## Summary

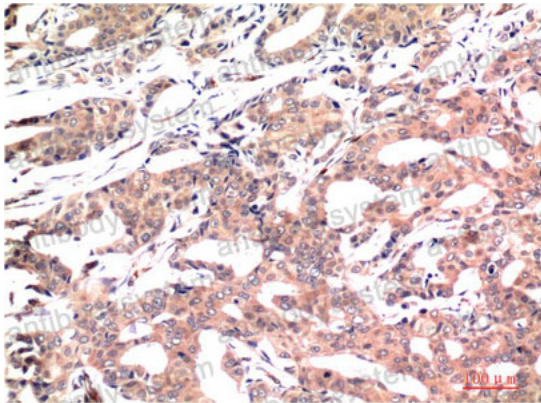
---

<b>Catalog No.</b>	RHE72105
<b>Clone ID</b>	R3M09
<b>Host species</b>	Mouse
<b>Tested applications</b>	IHC: 1:50-1:100, WB: 1:500-1:1000
<b>Species reactivity</b>	Human, Mouse, Rat
<b>Form</b>	Liquid
<b>Storage buffer</b>	0.01M PBS, pH 7.4, 0.5% BSA, 0.05% Sodium Azide and 50% Glycerol.
<b>Concentration</b>	1 mg/ml
<b>Purity</b>	>95% as determined by SDS-PAGE.
<b>Clonality</b>	Monoclonal
<b>Isotype</b>	IgG1
<b>Applications</b>	IHC, WB
<b>Target</b>	Glycogen synthase kinase-3 beta, GSK3B, Serine/threonine-protein kinase GSK3B, GSK-3 beta
<b>Purification</b>	Protein A/G purified from cell culture supernatant.
<b>Endotoxin level</b>	Please contact with the lab for this information.
<b>Accession</b>	P49841
<b>Stability and Storage</b>	Use a manual defrost freezer and avoid repeated freeze-thaw cycles. Store at 4°C short term (1-2 weeks). Store at -20°C 12 months. Store at -80°C long term.

**Note** For research use only.

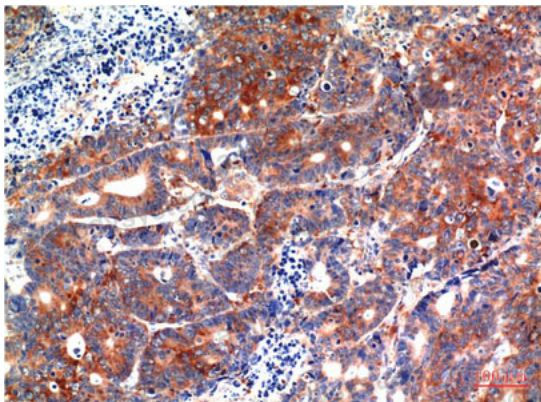
## Data Image

---



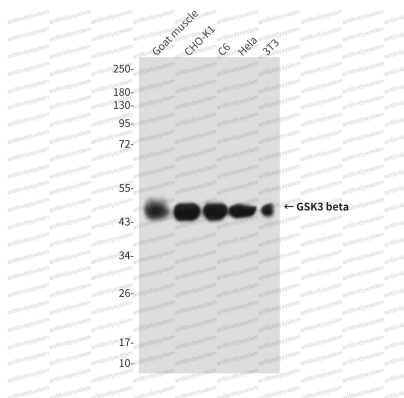
Immunohistochemical

Immunohistochemistry analysis of paraffin-embedded Human Breast Carcinoma Tissue using GSK3 beta antibody. High-pressure and temperature Sodium Citrate pH 6.0 was used for antigen retrieval.



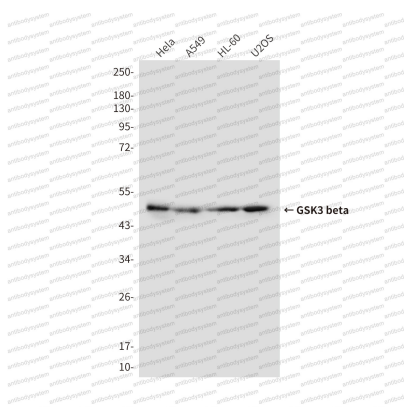
Immunohistochemical

Immunohistochemical analysis of paraffin-embedded Human tonsils using GSK3 beta antibody. High-pressure and temperature Sodium Citrate pH 6.0 was used for antigen retrieval.



Western blot

Western blot analysis of GSK3 beta in Goat muscle, CHO-K1, C6, HeLa, 3T3 lysates using GSK3 beta antibody



Western blot

Western blot analysis of GSK3 beta in HeLa, A549, HL-60, U2OS lysates using GSK3 beta antibody.