

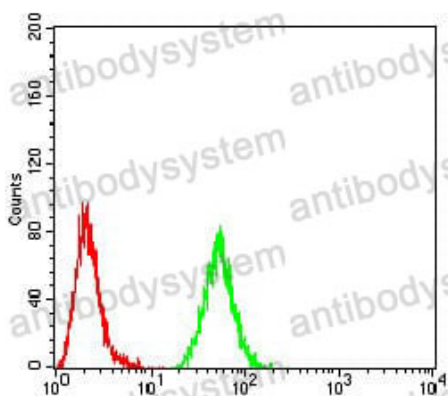
# Anti-RAD52 Antibody (R3L11)

## Summary

---

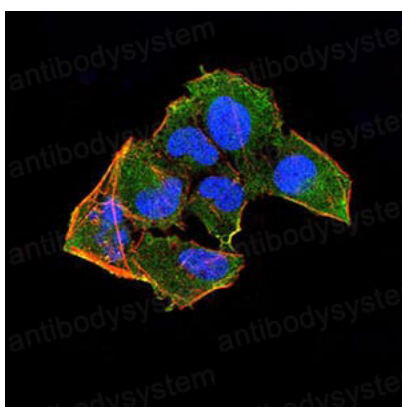
|                              |   |
|------------------------------|---|
| <b>Catalog No.</b>           | RHE41301  |
| <b>Clone ID</b>              | R3L11   |
| <b>Host species</b>          | Mouse   |
| <b>Tested applications</b>   | ELISA: 1:10000, FCM: 1:200-1:400, IF: 1:200-1:1000, WB: 1:500-1:2000  |
| <b>Species reactivity</b>    | Human   |
| <b>Form</b>                  | Liquid  |
| <b>Storage buffer</b>        | 0.01M PBS, pH 7.4, 0.05% Sodium Azide.  |
| <b>Concentration</b>         | 1 mg/ml   |
| <b>Purity</b>                | >95% as determined by SDS-PAGE.   |
| <b>Clonality</b>             | Monoclonal  |
| <b>Isotype</b>               | IgG1  |
| <b>Applications</b>          | ELISA, FCM, IF, WB  |
| <b>Target</b>                | RAD52, DNA repair protein RAD52 homolog   |
| <b>Purification</b>          | Protein A/G purified from cell culture supernatant.   |
| <b>Endotoxin level</b>       | Please contact with the lab for this information.   |
| <b>Accession</b>             | P43351  |
| <b>Stability and Storage</b> | Use a manual defrost freezer and avoid repeated freeze-thaw cycles.<br>Store at 4°C short term (1-2 weeks). Store at -20°C 12 months. Store at -80°C long term. |
| <b>Note</b>                  | For research use only.  |

## Data Image



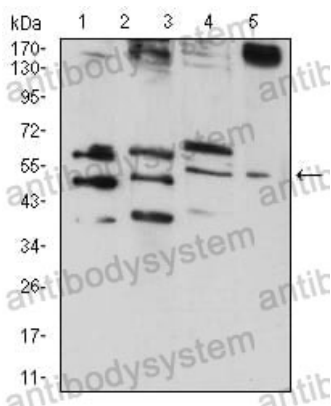
Flow Cytometry

Flow cytometric analysis of MCF7 cells using RAD52 mouse mAb (green) and negative control (red).



Immunofluorescence

Immunofluorescence analysis of HeLa cells using RAD52 mouse mAb (green). Blue: DRAQ5 fluorescent DNA dye. Red: Actin filaments have been labeled with Alexa Fluor-555 phalloidin.



Western blot

Western blot analysis using RAD52 mouse mAb against HepG2 (1), MCF-7 (2), MCF-7 (3), and C6 (4) cell lysate.