

Anti-ETV4 Antibody (R3L09)

Summary

Catalog No.	RHE40801
Clone ID	R3L09
Host species	Mouse
Tested applications	WB: 1:500-1:2000
Species reactivity	Human
Form	Liquid
Storage buffer	0.01M PBS, pH 7.4, 0.05% Sodium Azide.
Concentration	1 mg/ml
Purity	>95% as determined by SDS-PAGE.
Clonality	Monoclonal
Isotype	IgG1
Applications	WB
Target	Polyomavirus enhancer activator 3 homolog, E1A-F, Protein PEA3, PEA3, ETV4, ETS translocation variant 4, E1AF, Adenovirus E1A enhancer-binding protein
Purification	Protein A/G purified from cell culture supernatant.
Endotoxin level	Please contact with the lab for this information.
Accession	P43268

Stability and Storage

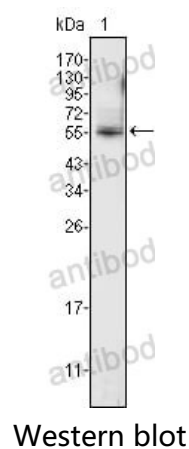
Use a manual defrost freezer and avoid repeated freeze-thaw cycles.

Store at 4°C short term (1-2 weeks). Store at -20°C 12 months. Store at -80°C long term.

Note

For research use only.

Data Image



Western blot analysis using ETV4 mouse mAb against K562 cell lysate (1).