

Anti-RRM1 Antibody (R3G51)

Summary

Catalog No.	RHD60803
Clone ID	R3G51
Host species	Mouse
Tested applications	ELISA: 1:10000, FCM: 1:200-1:400, WB: 1:500-1:2000
Species reactivity	Human
Form	Liquid
Storage buffer	0.01M PBS, pH 7.4, 0.05% Sodium Azide.
Concentration	1 mg/ml
Purity	>95% as determined by SDS-PAGE.
Clonality	Monoclonal
Isotype	IgG2a
Applications	ELISA, FCM, WB
Target	Ribonucleotide reductase large subunit, RRM1, Ribonucleoside-diphosphate reductase subunit M1, Ribonucleoside-diphosphate reductase large subunit, RR1
Purification	Protein A/G purified from cell culture supernatant.
Endotoxin level	Please contact with the lab for this information.
Accession	P23921

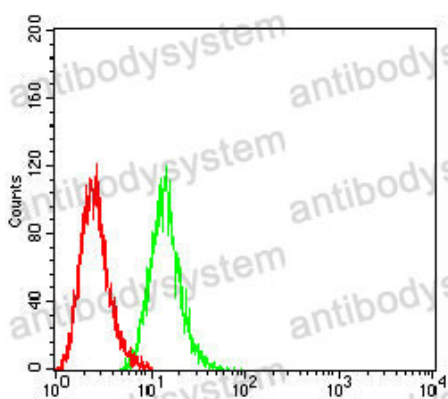
Stability and Storage

Use a manual defrost freezer and avoid repeated freeze-thaw cycles.

Store at 4°C short term (1-2 weeks). Store at -20°C 12 months. Store at -80°C long term.

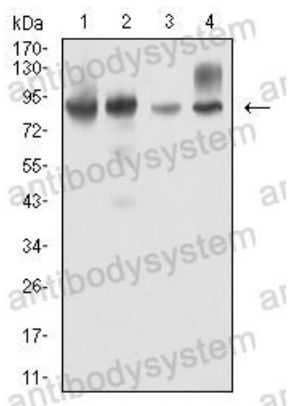
Note

For research use only.

Data Image

Flow Cytometry

Flow cytometric analysis of Hela cells using RRM1 mouse mAb (green) and negative control (red).



Western blot

Western blot analysis using RRM1 mouse mAb against Hela (1), Jurkat (2), HT-29 (3), and A431 (4) cell lysate.