

Anti-CD107a/LAMP1 Antibody (R3C55)

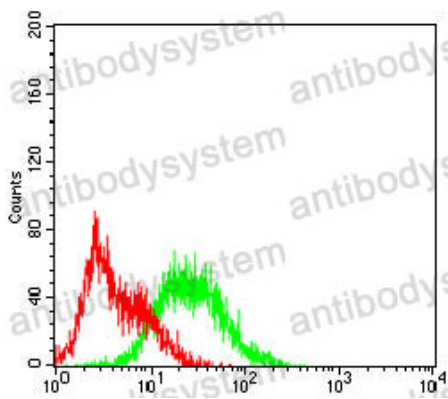
Summary

Catalog No.	RHC87702
Clone ID	R3C55
Host species	Mouse
Tested applications	ELISA: 1:10000, FCM: 1:200-1:400, IHC: 1:200-1:1000
Species reactivity	Human
Form	Liquid
Storage buffer	0.01M PBS, pH 7.4, 0.05% Sodium Azide.
Concentration	1 mg/ml
Purity	>95% as determined by SDS-PAGE.
Clonality	Monoclonal
Isotype	IgG1
Applications	ELISA, FCM, IHC
Target	LAMP1, Lysosome-associated membrane protein 1, CD107 antigen-like family member A, CD107a, LAMP-1, Lysosome-associated membrane glycoprotein 1
Purification	Protein A/G purified from cell culture supernatant.
Endotoxin level	Please contact with the lab for this information.
Accession	P11279

Stability and Storage Use a manual defrost freezer and avoid repeated freeze-thaw cycles.
Store at 4°C short term (1-2 weeks). Store at -20°C 12 months. Store at -80°C long term.

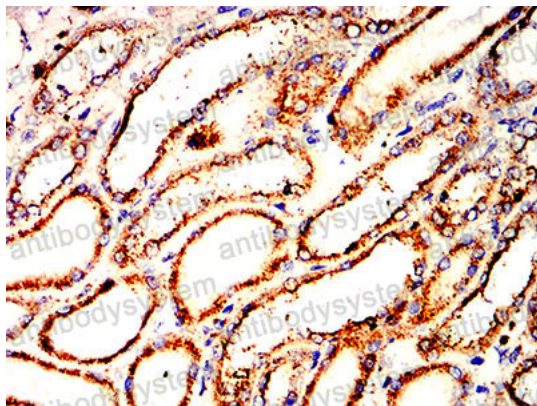
Note For research use only.

Data Image



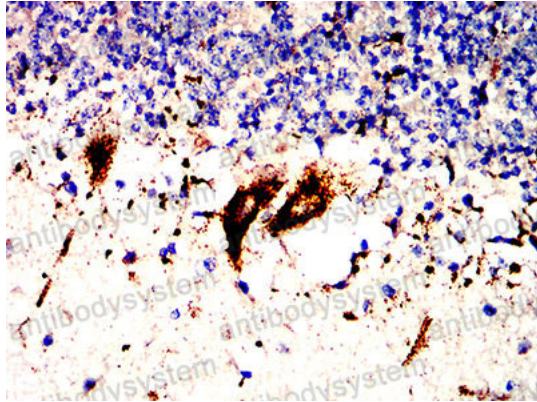
Flow Cytometry

Flow cytometric analysis of Hek293 cells using LAMP1 mouse mAb (green) and negative control (red).



Immunohistochemical

Immunohistochemical analysis of paraffin-embedded human kidney tissues using LAMP1 mouse mAb with DAB staining.



Immunohistochemical

Immunohistochemical analysis of paraffin-embedded human cerebellum tissues using LAMP1 mouse mAb with DAB staining.