

# Anti-CCL3/MIP-1-alpha Antibody (R3C03)

## Summary

---

<b>Catalog No.</b>	RHC79202
<b>Clone ID</b>	R3C03
<b>Host species</b>	Mouse
<b>Tested applications</b>	IHC: 1:100-1:200, WB: 1:500-1:1000
<b>Species reactivity</b>	Human
<b>Form</b>	Liquid
<b>Storage buffer</b>	0.01M PBS, pH 7.4, 0.05% Sodium Azide.
<b>Concentration</b>	1 mg/ml
<b>Purity</b>	>95% as determined by SDS-PAGE.
<b>Clonality</b>	Monoclonal
<b>Isotype</b>	IgG2b
<b>Applications</b>	IHC, WB
<b>Target</b>	Tonsillar lymphocyte LD78 alpha protein, CCL3, G0S19-1, MIP1A, Macrophage inflammatory protein 1-alpha, LD78-alpha(4-69), SCYA3, SIS-beta, Small-inducible cytokine A3, C-C motif chemokine 3, G0/G1 switch regulatory protein 19-1, PAT 464.1, MIP-1-alpha
<b>Purification</b>	Protein A/G purified from cell culture supernatant.
<b>Endotoxin level</b>	Please contact with the lab for this information.
<b>Accession</b>	P10147

**Stability and Storage**

Use a manual defrost freezer and avoid repeated freeze-thaw cycles.

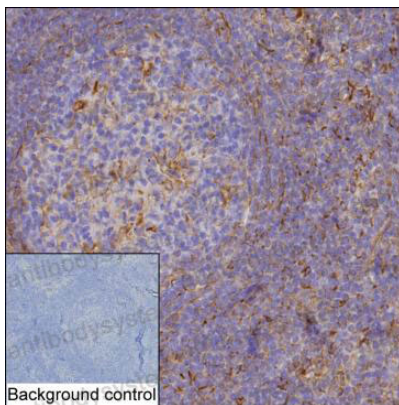
Store at 4°C short term (1-2 weeks). Store at -20°C 12 months. Store at -80°C long term.

**Note**

For research use only.

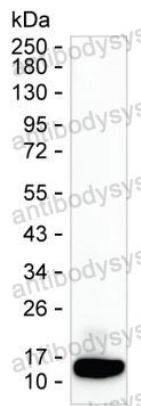
## Data Image

---



Immunohistochemical

IHC-P analysis of tonsil tissue by CCL3 antibody (RHC79202). IHC-P was performed using sections of the formalin-fixed paraffin-embedded tonsil tissue; Result: Germinal center cells and non-germinal center cells are positively stained at the cytoplasm and cell membrane.



Western blot

Result: RHC79202 can detect CCL3 by Western blotting.