

# Anti-KRT7 Antibody (R3B34)

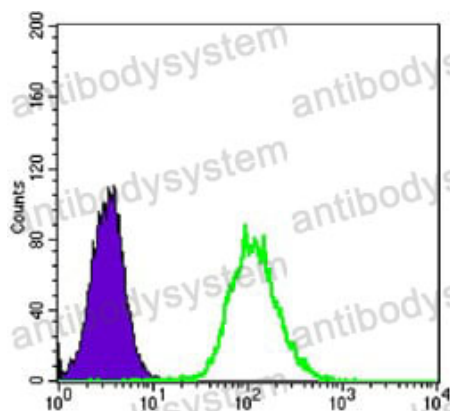
## Summary

---

<b>Catalog No.</b>	RHC36102
<b>Clone ID</b>	R3B34
<b>Host species</b>	Mouse
<b>Tested applications</b>	FCM: 1:200-1:400, WB: 1:500-1:2000
<b>Species reactivity</b>	Human
<b>Form</b>	Liquid
<b>Storage buffer</b>	0.01M PBS, pH 7.4, 0.05% Sodium Azide.
<b>Concentration</b>	1 mg/ml
<b>Purity</b>	>95% as determined by SDS-PAGE.
<b>Clonality</b>	Monoclonal
<b>Isotype</b>	IgG1
<b>Applications</b>	FCM, WB
<b>Target</b>	Cytokeratin-7, Keratin-7, Type-II keratin Kb7, SCL, CK-7, Sarcolectin, KRT7, K7, Keratin, type II cytoskeletal 7
<b>Purification</b>	Protein A/G purified from cell culture supernatant.
<b>Endotoxin level</b>	Please contact with the lab for this information.
<b>Accession</b>	P08729
<b>Stability and Storage</b>	Use a manual defrost freezer and avoid repeated freeze-thaw cycles. Store at 4°C short term (1-2 weeks). Store at -20°C 12 months. Store at -80°C long term.

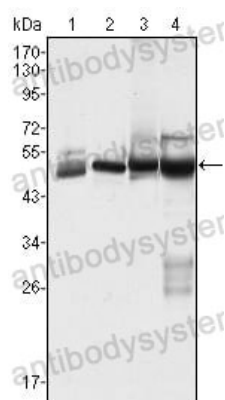
**Note**

For research use only.

**Data Image**

Flow Cytometry

Flow cytometric analysis of Hela cells using anti-CK7 mAb (green) and negative control (purple).



Western blot

Western blot analysis using CK7 mouse mAb against Hela (1), MCF-7 (2), A431 (3) and A549 (4) cell lysate.