

Anti-KRT19/CK19 Antibody (R3B31)

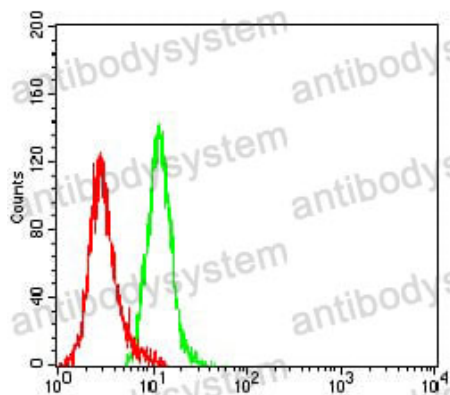
Summary

| | |
|------------------------------|---|
| Catalog No. | RHC36008 |
| Clone ID | R3B31 |
| Host species | Mouse |
| Tested applications | ELISA: 1:10000, FCM: 1:200-1:400, IHC: 1:200-1:1000, WB: 1:500-1:2000 |
| Species reactivity | Human, Rat |
| Form | Liquid |
| Storage buffer | 0.01M PBS, pH 7.4, 0.05% Sodium Azide. |
| Concentration | 1 mg/ml |
| Purity | >95% as determined by SDS-PAGE. |
| Clonality | Monoclonal |
| Isotype | IgG1 |
| Applications | ELISA, FCM, IHC, WB |
| Target | CK-19, Cytokeratin-19, K19, KRT19, Keratin-19, Keratin, type I cytoskeletal 19 |
| Purification | Protein A/G purified from cell culture supernatant. |
| Endotoxin level | Please contact with the lab for this information. |
| Accession | P08727 |
| Stability and Storage | Use a manual defrost freezer and avoid repeated freeze-thaw cycles. Store at 4°C short term (1-2 weeks). Store at -20°C 12 months. Store at -80°C long term. |

Note

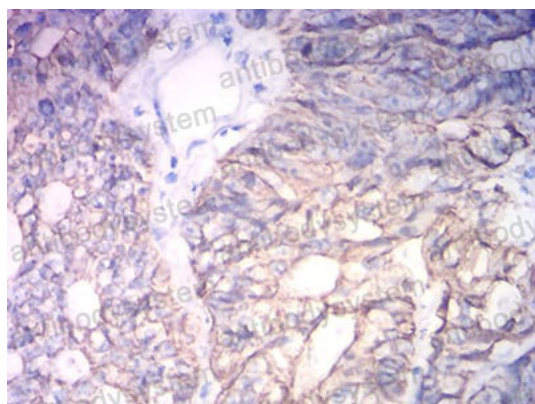
For research use only.

Data Image



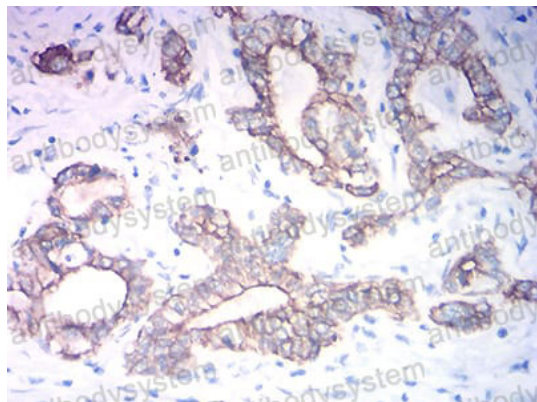
Flow Cytometry

Flow cytometric analysis of Hela cells using KRT19 mouse mAb (green) and negative control (red).



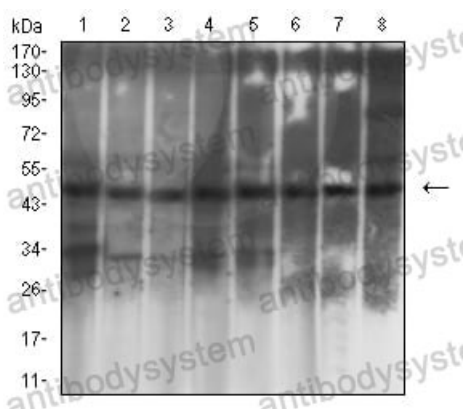
Immunohistochemical

Immunohistochemical analysis of paraffin-embedded human colon cancer tissues using KRT19 mouse mAb with DAB staining.



Immunohistochemical

Immunohistochemical analysis of paraffin-embedded human stomach cancer tissues using KRT19 mouse mAb with DAB staining.



Western blot

Western blot analysis using KRT19 mouse mAb against T47D (1), MCF-7 (2), HepG2 (3), SW620 (4), HT-29 (5), HCT116 (6), PC-12 (7), and C6 (8) cell lysate.