

Anti-PDHA1 Antibody (R3A93)

Summary

Catalog No.	RHC33504
Clone ID	R3A93
Host species	Mouse
Tested applications	ELISA: 1:10000, FCM: 1:200-1:400, IF: 1:50-1:200, IHC: 1:200-1:1000, IP: 1:200-1:300, WB: 1:500-1:2000
Species reactivity	Human, Mouse, Rat
Form	Liquid
Storage buffer	0.01M PBS, pH 7.4, 0.05% Sodium Azide.
Concentration	1 mg/ml
Purity	>95% as determined by SDS-PAGE.
Clonality	Monoclonal
Isotype	IgG1
Applications	ELISA, FCM, IF, IHC, IP, WB
Target	PHE1A, PDHE1-A type I, Pyruvate dehydrogenase E1 component subunit alpha, somatic form, mitochondrial, PDHA1
Purification	Protein A/G purified from cell culture supernatant.
Endotoxin level	Please contact with the lab for this information.
Accession	P08559

Stability and Storage

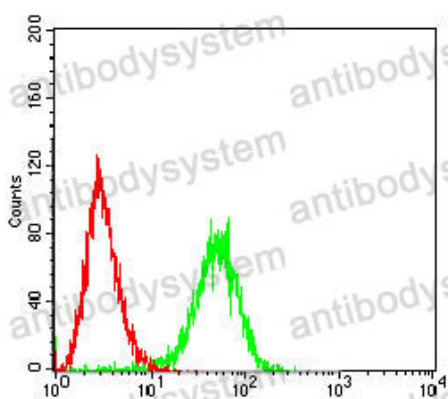
Use a manual defrost freezer and avoid repeated freeze-thaw cycles.

Store at 4°C short term (1-2 weeks). Store at -20°C 12 months. Store at -80°C long term.

Note

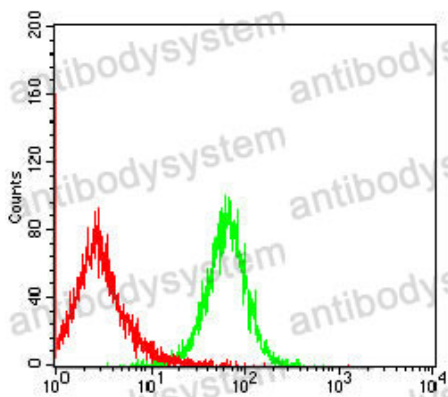
For research use only.

Data Image



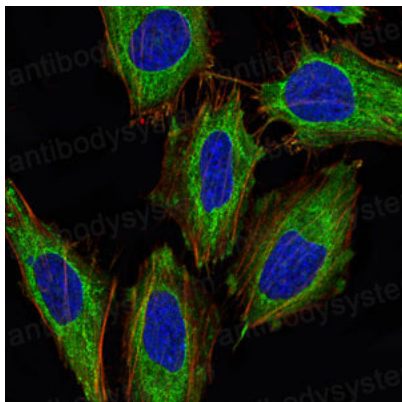
Flow Cytometry

Flow cytometric analysis of Hela cells using PDHA1 mouse mAb (green) and negative control (red).



Flow Cytometry

Flow cytometric analysis of Jurkat cells using PDHA1 mouse mAb (green) and negative control (red).



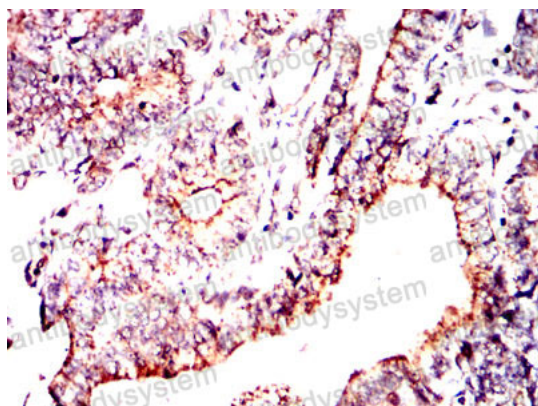
Immunofluorescence

Immunofluorescence analysis of HeLa cells using PDHA1 mouse mAb (green). Blue: DRAQ5 fluorescent DNA dye. Red: Actin filaments have been labeled with Alexa Fluor- 555 phalloidin.



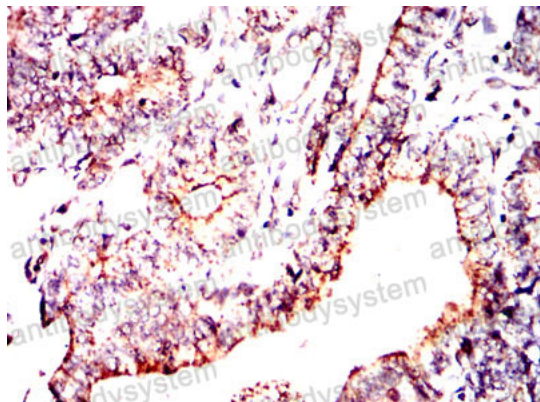
Immunofluorescence

Immunofluorescence analysis of NIH/3T3 cells using PDHA1 mouse mAb (green). Blue: DRAQ5 fluorescent DNA dye. Red: Actin filaments have been labeled with Alexa Fluor- 555 phalloidin.



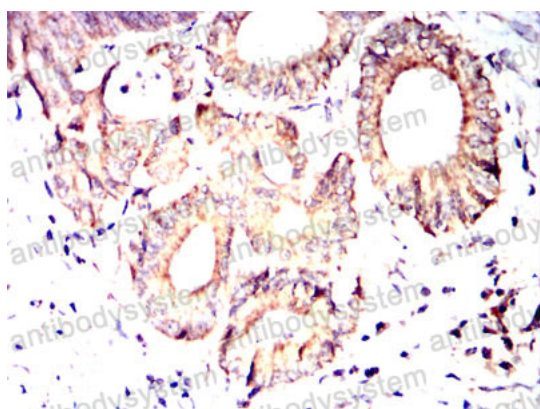
Immunohistochemical

Immunohistochemical analysis of paraffin-embedded human lung cancer tissues using PDHA1 mouse mAb with DAB staining.



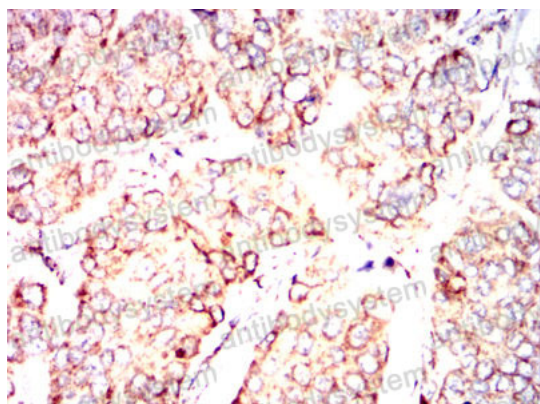
Immunohistochemical

Immunohistochemical analysis of paraffin-embedded human lung cancer tissues using PDHA1 mouse mAb with DAB staining.



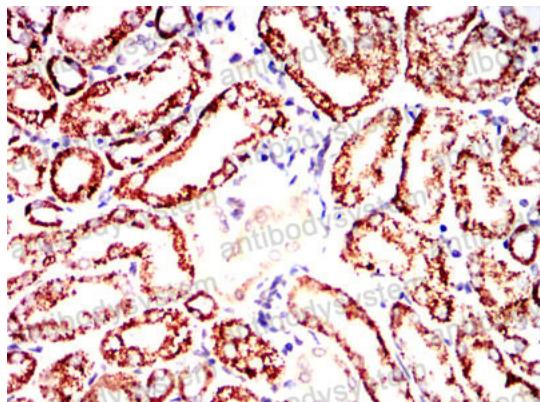
Immunohistochemical

Immunohistochemical analysis of paraffin-embedded human colon cancer tissues using PDHA1 mouse mAb with DAB staining.



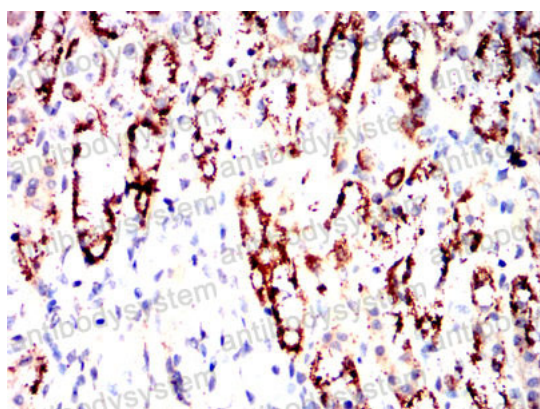
Immunohistochemical

Immunohistochemical analysis of paraffin-embedded human breast cancer tissues using PDHA1 mouse mAb with DAB staining.



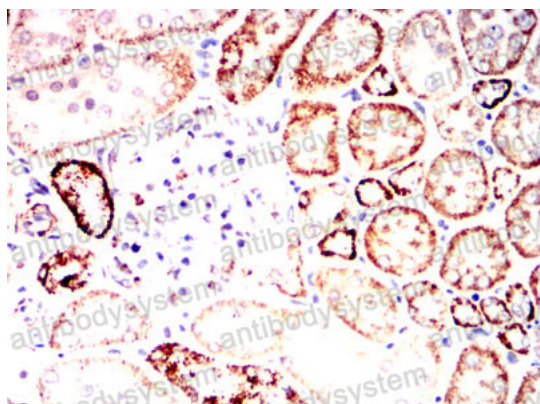
Immunohistochemical

Immunohistochemical analysis of paraffin-embedded mouse kidney tissues using PDHA1 mouse mAb with DAB staining.



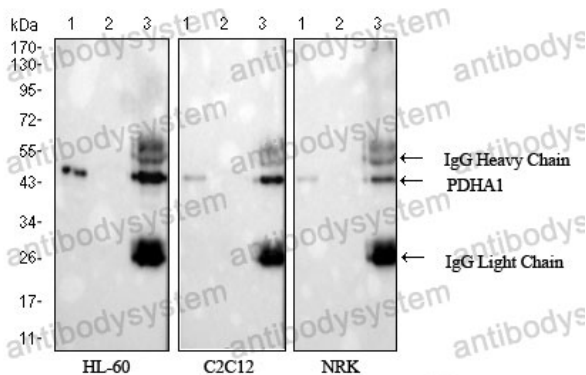
Immunohistochemical

Immunohistochemical analysis of paraffin-embedded Rat kidney tissues using PDHA1 mouse mAb with DAB staining.

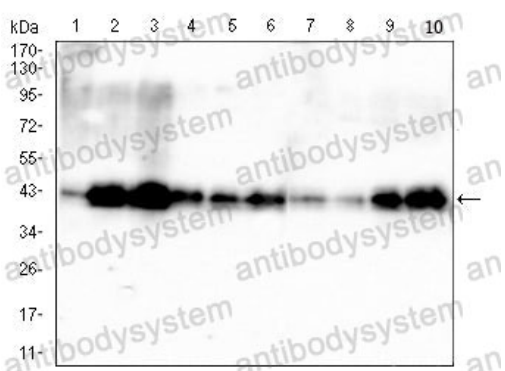


Immunohistochemical

Immunohistochemical analysis of paraffin-embedded Rabbit kidney tissues using PDHA1 mouse mAb with DAB staining.



Immunoprecipitation



Western blot

Immunoprecipitation using PDHA1 mouse mAb(dilution: 1/250) against HL-60, C2C12, and NRK cell lysate. Western blot analysis using PDHA1 mouse mAb, anti-mouse IgG was used as secondary antibody. Lane 1: cell lysate, Lane 2: Normal Mouse IgG instead of PDHA1 mouse mAb IP in cell lysate, Lane 3: PDHA1 mouse mAb IP in cell lysate.

Western blot analysis using PDHA1 mouse mAb against HepG2 (1), HEK293 (2), HL-60 (3), SK-OV-3 (4), PC-3 (5), PANC-1 (6), NRK (7), C2C12 (8), C6 (9) and PC-12 (10) cell lysate.