

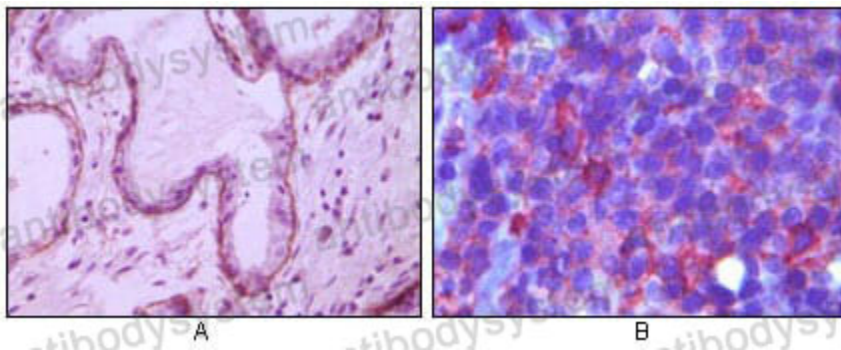
Anti-CD10/MME Antibody (R3A73)

Summary

Catalog No.	RHC33002
Clone ID	R3A73
Host species	Mouse
Tested applications	IHC: 1:200-1:1000
Species reactivity	Human
Form	Liquid
Storage buffer	0.01M PBS, pH 7.4, 0.05% Sodium Azide.
Concentration	1 mg/ml
Purity	>95% as determined by SDS-PAGE.
Clonality	Monoclonal
Isotype	IgG2b
Applications	IHC
Target	Atriopeptidase, Common acute lymphocytic leukemia antigen, Neutral endopeptidase, Skin fibroblast elastase, CD10, SFE, CALLA, Neprilysin, Neutral endopeptidase 24.11, MME, NEP, Enkephalinase, EPN
Purification	Protein A/G purified from cell culture supernatant.
Endotoxin level	Please contact with the lab for this information.
Accession	P08473

Stability and Storage	Use a manual defrost freezer and avoid repeated freeze-thaw cycles. Store at 4°C short term (1-2 weeks). Store at -20°C 12 months. Store at -80°C long term.
Note	For research use only.

Data Image



Immunohistochemical

Immunohistochemical analysis of paraffin-embedded human breast ductal myoepithelium (A) and lymph tissue (B), showing cytoplasmic (A) and membrane (B) localization using CD10 mouse mAb with DAB staining (A) and AEC staining (B).