

Anti-ELANE Antibody (R3A65)

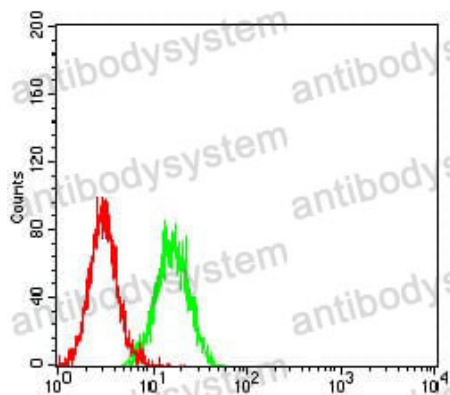
Summary

Catalog No.	RHC32102
Clone ID	R3A65
Host species	Mouse
Tested applications	ELISA: 1:10000, FCM: 1:200-1:400, WB: 1:500-1:2000
Species reactivity	Human, Rat
Form	Liquid
Storage buffer	0.01M PBS, pH 7.4, 0.05% Sodium Azide.
Concentration	1 mg/ml
Purity	>95% as determined by SDS-PAGE.
Clonality	Monoclonal
Isotype	IgG1
Applications	ELISA, FCM, WB
Target	Medullasin, ELA2, ELANE, PMN elastase, Neutrophil elastase, HLE, Human leukocyte elastase, Elastase-2, Bone marrow serine protease
Purification	Protein A/G purified from cell culture supernatant.
Endotoxin level	Please contact with the lab for this information.
Accession	P08246
Stability and Storage	Use a manual defrost freezer and avoid repeated freeze-thaw cycles. Store at 4°C short term (1-2 weeks). Store at -20°C 12 months. Store at -80°C long term.

Note

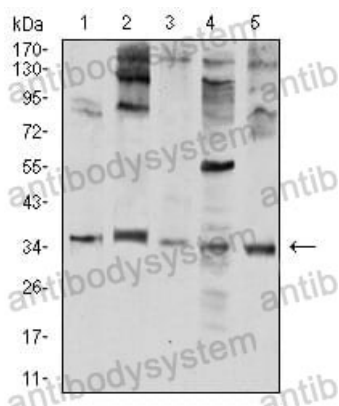
For research use only.

Data Image



Flow Cytometry

Flow cytometric analysis of K562 cells using ELANE mouse mAb (green) and negative control (red).



Western blot

Western blot analysis using ELANE mouse mAb against HL-60 (1), THP-1 (2), MOLT4 (3), C6 (4), and K562 (5) cell lysate.