

# Anti-c-JUN Antibody (R2Z24)

## Summary

---

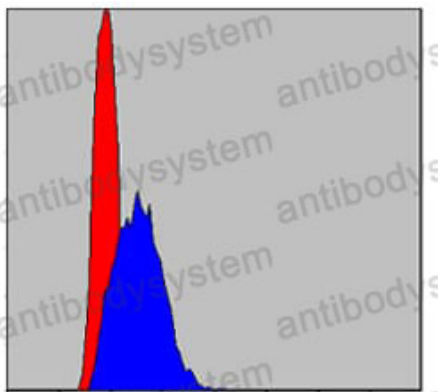
<b>Catalog No.</b>	RHC16505
<b>Clone ID</b>	R2Z24
<b>Host species</b>	Mouse
<b>Tested applications</b>	ELISA: 1:10000, FCM: 1:200-1:400, IF: 1:200-1:1000, IHC: 1:200-1:1000, WB: 1:500-1:2000
<b>Species reactivity</b>	Human, Mouse, Monkey
<b>Form</b>	Liquid
<b>Storage buffer</b>	0.01M PBS, pH 7.4, 0.05% Sodium Azide.
<b>Concentration</b>	1 mg/ml
<b>Purity</b>	>95% as determined by SDS-PAGE.
<b>Clonality</b>	Monoclonal
<b>Isotype</b>	IgG1
<b>Applications</b>	ELISA, FCM, IF, IHC, WB
<b>Target</b>	Proto-oncogene c-Jun, JUN, V-jun avian sarcoma virus 17 oncogene homolog, Transcription factor AP-1, AP1, Activator protein 1, p39
<b>Purification</b>	Protein A/G purified from cell culture supernatant.
<b>Endotoxin level</b>	Please contact with the lab for this information.
<b>Accession</b>	P05412

**Stability and Storage** Use a manual defrost freezer and avoid repeated freeze-thaw cycles.  
Store at 4°C short term (1-2 weeks). Store at -20°C 12 months. Store at -80°C long term.

**Note** For research use only.

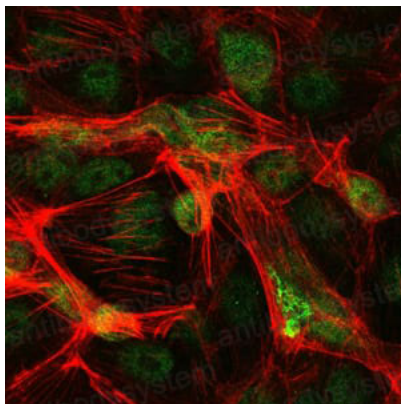
## Data Image

---



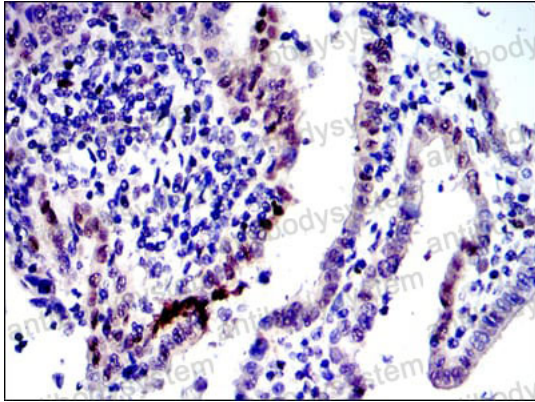
Flow Cytometry

Flow cytometric analysis of HepG2 cells using c-Jun mouse mAb (blue) and negative control (red).



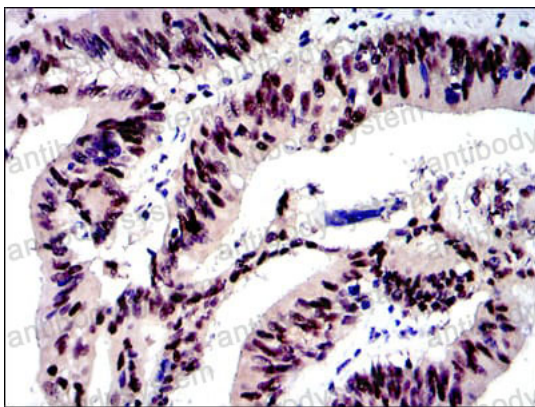
Immunofluorescence

Immunofluorescence analysis of PC-2 cells using c-Jun mouse mAb (green). Red: Actin filaments have been labeled with Alexa Fluor-555 phalloidin.



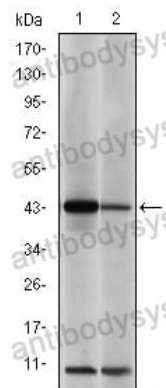
Immunohistochemical

Immunohistochemical analysis of paraffin-embedded human intima cancer tissues using c-Jun mouse mAb with DAB staining.



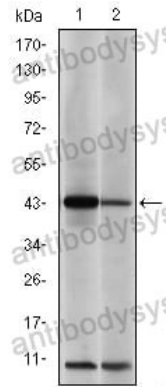
Immunohistochemical

Immunohistochemical analysis of paraffin-embedded human rectum cancer tissues using c-Jun mouse mAb with DAB staining.



Western blot

Western blot analysis using c-Jun mouse mAb against NIH/3T3 (1) and Cos7 (2) cell lysate.



Western blot

Western blot analysis using c-Jun mouse mAb against NIH/3T3 (1) and Cos7 (2) cell lysate.