

Anti-CYP1A1 Antibody (R2Y89)

Summary

Catalog No.	RHC10601
Clone ID	R2Y89
Host species	Mouse
Tested applications	ELISA: 1:10000, IHC: 1:200-1:1000
Species reactivity	Human
Form	Liquid
Storage buffer	0.01M PBS, pH 7.4, 0.05% Sodium Azide.
Concentration	1 mg/ml
Purity	>95% as determined by SDS-PAGE.
Clonality	Monoclonal
Isotype	IgG1
Applications	ELISA, IHC
Target	Cytochrome P450 form 6, Hydroperoxy icosatetraenoate dehydratase, Cytochrome P450 1A1, CYP1A1, Cytochrome P450-P1, Cytochrome P450-C, CYP1A1
Purification	Protein A/G purified from cell culture supernatant.
Endotoxin level	Please contact with the lab for this information.
Accession	P04798

Stability and Storage

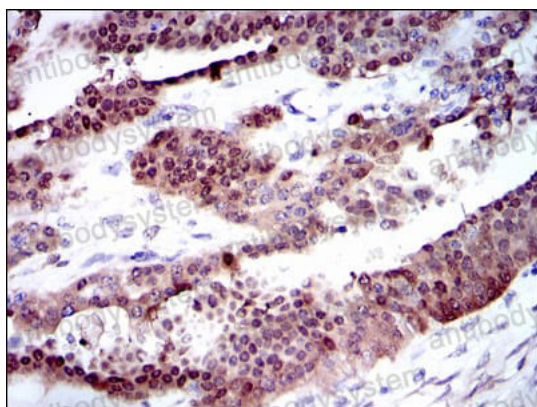
Use a manual defrost freezer and avoid repeated freeze-thaw cycles.

Store at 4°C short term (1-2 weeks). Store at -20°C 12 months. Store at -80°C long term.

Note

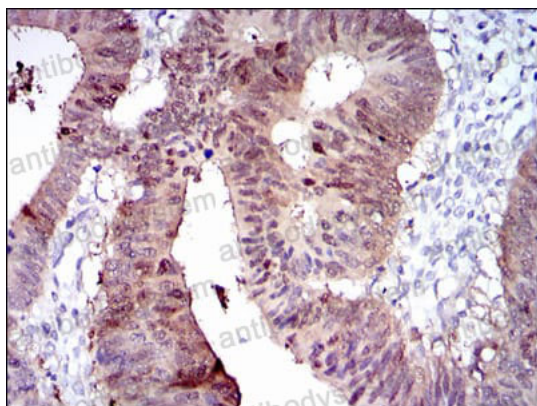
For research use only.

Data Image



Immunohistochemical

Immunohistochemical analysis of paraffin-embedded human ovarian cancer tissues using CYP1A1 mouse mAb with DAB staining.



Immunohistochemical

Immunohistochemical analysis of paraffin-embedded human rectum cancer tissues using CYP1A1 mouse mAb with DAB staining.