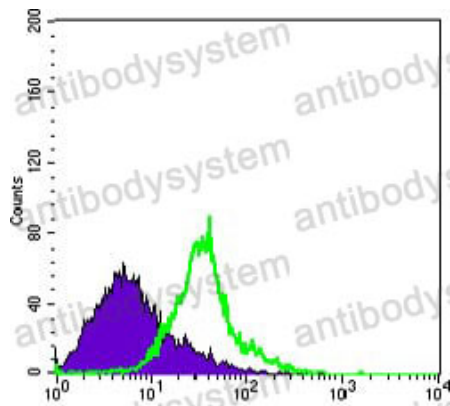


Anti-WNT1 Antibody (R2Y80)

Summary

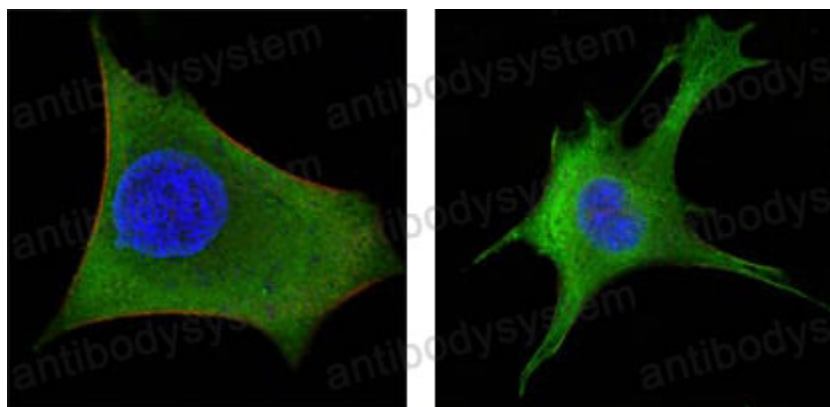
Catalog No.	RHC09701
Clone ID	R2Y80
Host species	Mouse
Tested applications	FCM: 1:200-1:400, IF: 1:200-1:1000, IHC: 1:200-1:1000, WB: 1:500-1:2000
Species reactivity	Human, Mouse
Form	Liquid
Storage buffer	0.01M PBS, pH 7.4, 0.05% Sodium Azide.
Concentration	1 mg/ml
Purity	>95% as determined by SDS-PAGE.
Clonality	Monoclonal
Isotype	IgG1
Applications	FCM, IF, IHC, WB
Target	WNT1, Proto-oncogene Wnt-1, INT1, Proto-oncogene Int-1 homolog
Purification	Protein A/G purified from cell culture supernatant.
Endotoxin level	Please contact with the lab for this information.
Accession	P04628
Stability and Storage	Use a manual defrost freezer and avoid repeated freeze-thaw cycles. Store at 4°C short term (1-2 weeks). Store at -20°C 12 months. Store at -80°C long term.
Note	For research use only.

Data Image



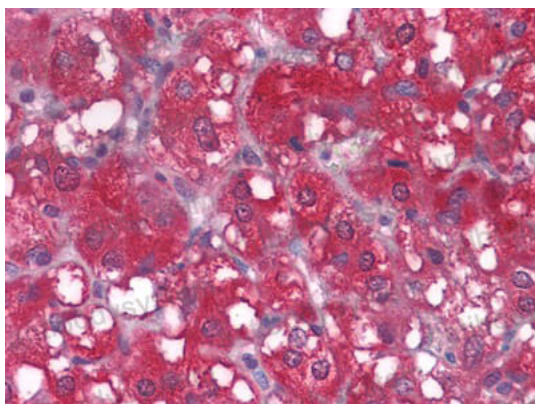
Flow Cytometry

Flow cytometric analysis of Hela cells using WNT1 mouse mAb (green) and negative control (purple).



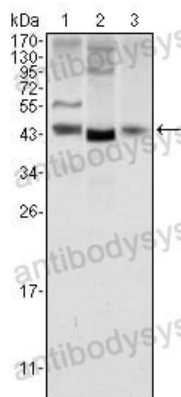
Immunofluorescence

Figure3: Confocal Immunofluorescence analysis of Hela (left) and 3T3-L1 (right) cells using WNT1 mouse mAb (green). Red: Actin filaments have been labeled with DY-554 phalloidin. Blue: DRAQ5 fluorescent DNA dye.



Immunohistochemical

Immunohistochemical analysis of paraffin-embedded human LAdrenal tissues using WNT1 mouse mAb



Western blot

Western blot analysis using WNT1 mouse mAb against NIH/3T3 (1), 3T3L1 (2) and HeLa (3) cell lysate.