

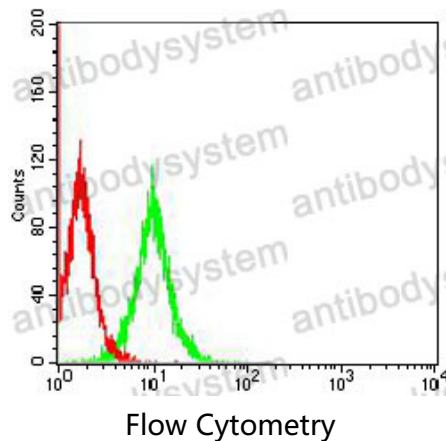
Anti-GAPDH Antibody (R2Y76)

Summary

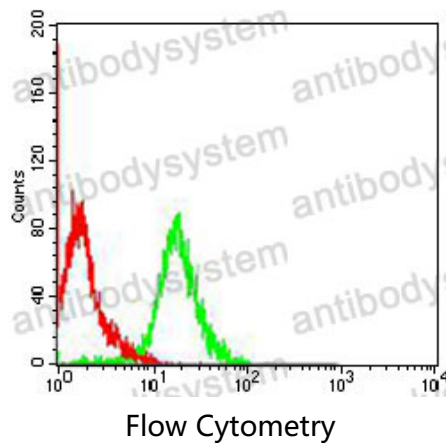
Catalog No.	RHC09001
Clone ID	R2Y76
Host species	Mouse
Tested applications	FCM: 1:200-1:400, IF: 1:200-1:1000, IHC: 1:200-1:1000, WB: 1:5000-1:20000
Species reactivity	Human, Mouse, Rat, Rabbit, Monkey
Form	Liquid
Storage buffer	0.01M PBS, pH 7.4, 0.05% Sodium Azide.
Concentration	1 mg/ml
Purity	>95% as determined by SDS-PAGE.
Clonality	Monoclonal
Isotype	IgG1
Applications	FCM, IF, IHC, WB
Target	GAPD, Peptidyl-cysteine S-nitrosylase GAPDH, GAPDH, Glyceraldehyde-3-phosphate dehydrogenase
Purification	Protein A/G purified from cell culture supernatant.
Endotoxin level	Please contact with the lab for this information.
Accession	P04406
Stability and Storage	Use a manual defrost freezer and avoid repeated freeze-thaw cycles. Store at 4°C short term (1-2 weeks). Store at -20°C 12 months. Store at -80°C long term.

Note For research use only.

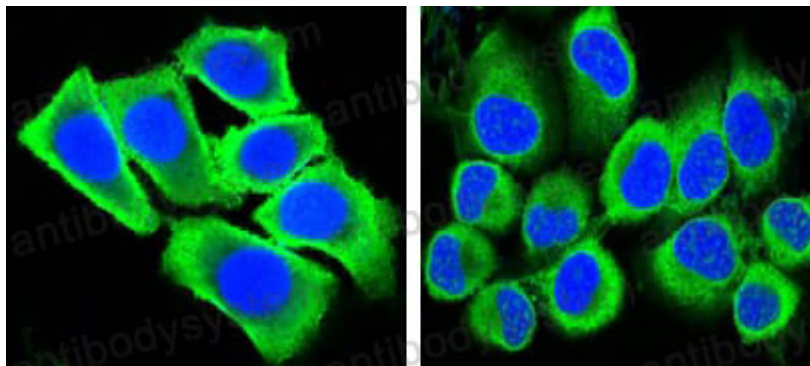
Data Image



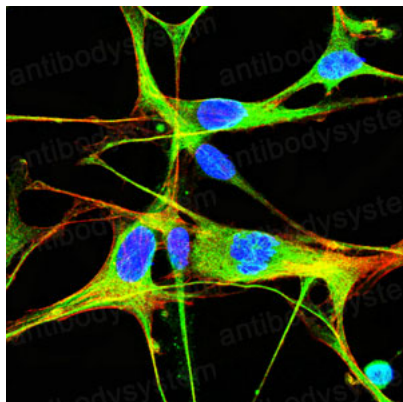
Flow cytometric analysis of NIH3T3 cells using GAPDH mouse mAb (green) and negative control (red).



Flow cytometric analysis of COS7 cells using GAPDH mouse mAb (green) and negative control (red).

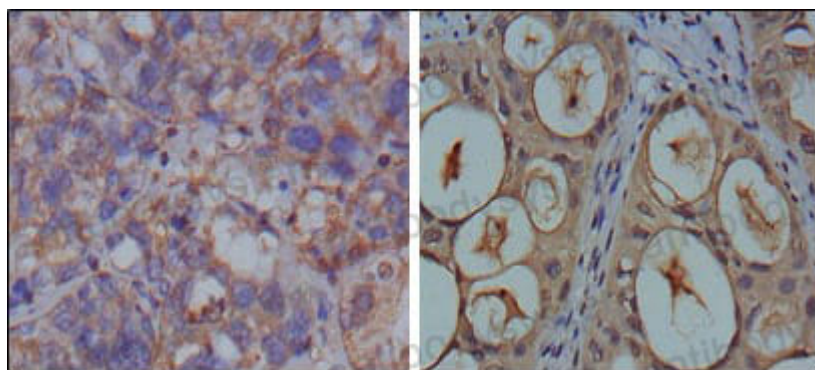


Confocal Immunofluorescence analysis of methanol-fixed HepG2 (left) and HeLa (right) cells using GAPDH mouse mAb (green), showing cytoplasmic localization. Blue: DRAQ5 fluorescent DNA dye.



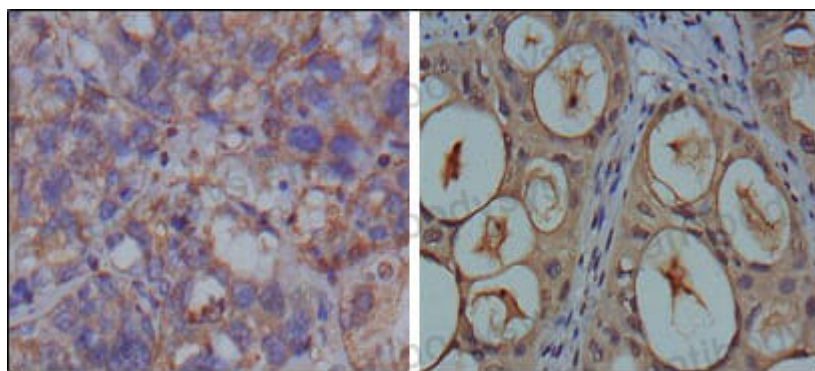
Immunofluorescence

Immunofluorescence analysis of NIH3T3 cells using GAPDH mouse mAb (green). Blue: DRAQ5 fluorescent DNA dye. Red: Actin filaments have been labeled with Alexa Fluor- 555 phalloidin.



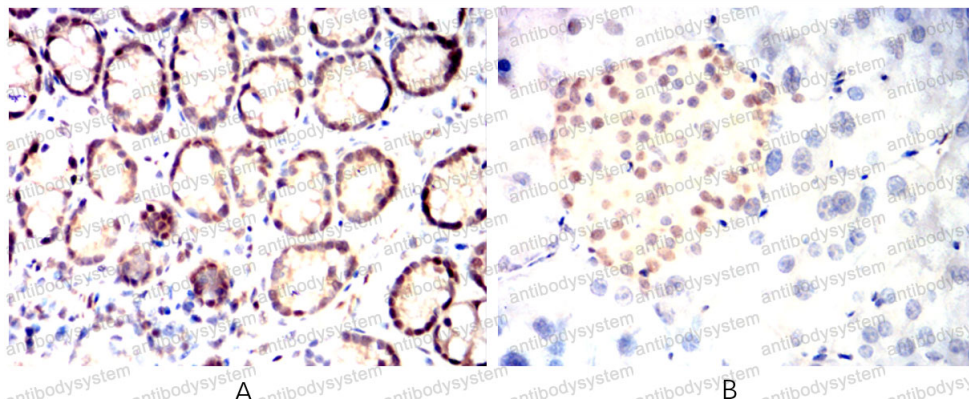
Immunohistochemical

Immunohistochemical analysis of paraffin-embedded human breast carcinoma (left) and kidney carcinoma (right), showing cytoplasmic localization using GAPDH mouse mAb with DAB staining.



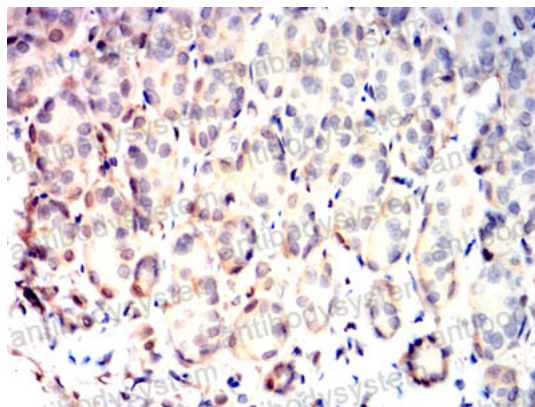
Immunohistochemical

Immunohistochemical analysis of paraffin-embedded human breast carcinoma (left) and kidney carcinoma (right), showing cytoplasmic localization using GAPDH mouse mAb with DAB staining.



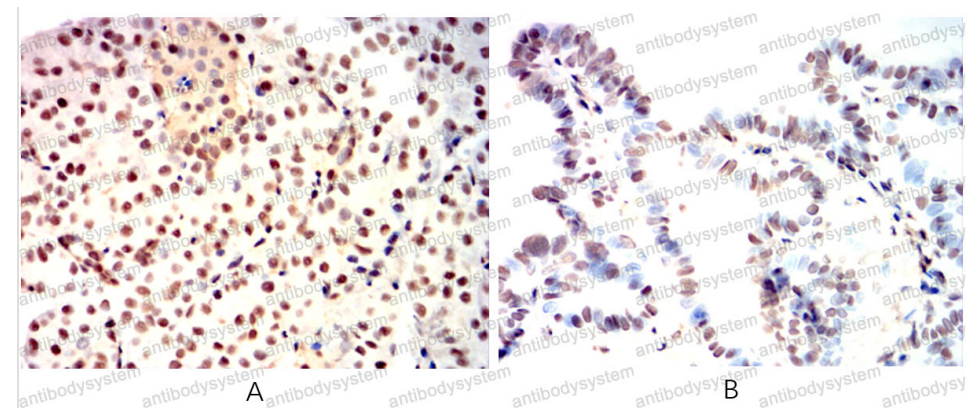
Immunohistochemical

Immunohistochemical analysis of paraffin-embedded Mouse colon(A) Mouse pancreas(B) using GAPDH mouse mAb with DAB staining.



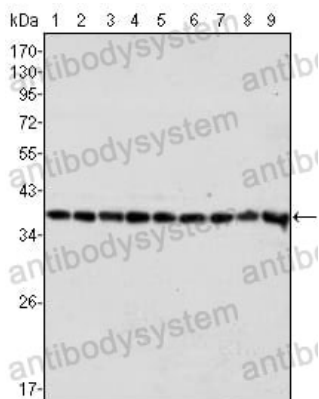
Immunohistochemical

Immunohistochemical analysis of paraffin-embedded Rat stomach using GAPDH mouse mAb with DAB staining.



Immunohistochemical

Immunohistochemical analysis of paraffin-embedded Rabbit pancreas(A) Rabbit prostate(B) using GAPDH mouse mAb with DAB staining.



Western blot

Western blot analysis using
GAPDH mouse mAb against
Hela (1), A549 (2), A431 (3),
MCF-7 (4), K562 (5), Jurkat (6),
HL60 (7), SKN-SH (8) and SKBR-
3 (9) cell lysate.