

Anti-MBP Antibody (R2Y02)

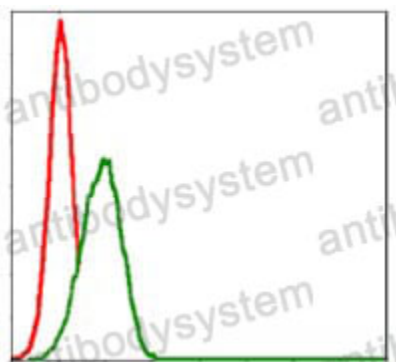
Summary

Catalog No.	RHB99404
Clone ID	R2Y02
Host species	Mouse
Tested applications	ELISA: 1:10000, FCM: 1:200-1:400, IF: 1:200-1:1000, IHC: 1:200-1:1000
Species reactivity	Human
Form	Liquid
Storage buffer	0.01M PBS, pH 7.4, 0.05% Sodium Azide.
Concentration	1 mg/ml
Purity	>95% as determined by SDS-PAGE.
Clonality	Monoclonal
Isotype	IgG1
Applications	ELISA, FCM, IF, IHC
Target	Myelin basic protein, Myelin membrane encephalitogenic protein, MBP, Myelin A1 protein
Purification	Protein A/G purified from cell culture supernatant.
Endotoxin level	Please contact with the lab for this information.
Accession	P02686
Stability and Storage	Use a manual defrost freezer and avoid repeated freeze-thaw cycles. Store at 4°C short term (1-2 weeks). Store at -20°C 12 months. Store at -80°C long term.

Note

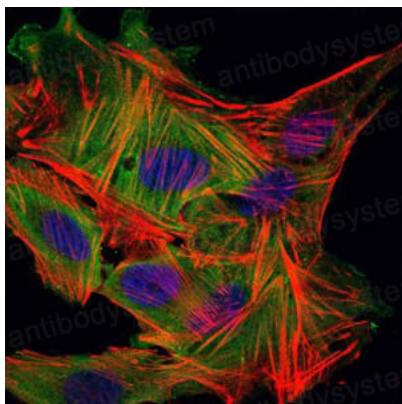
For research use only.

Data Image



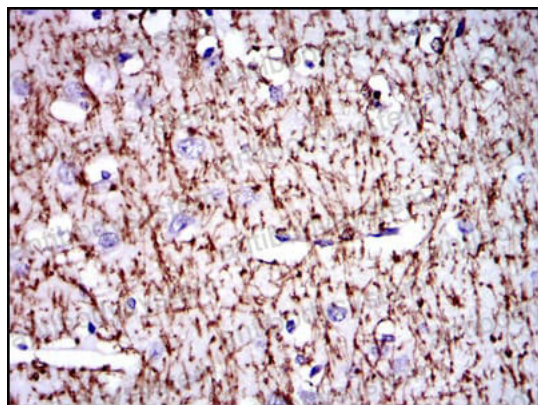
Flow Cytometry

Flow cytometric analysis of HepG2 cells using MBP mouse mAb (green) and negative control (red).



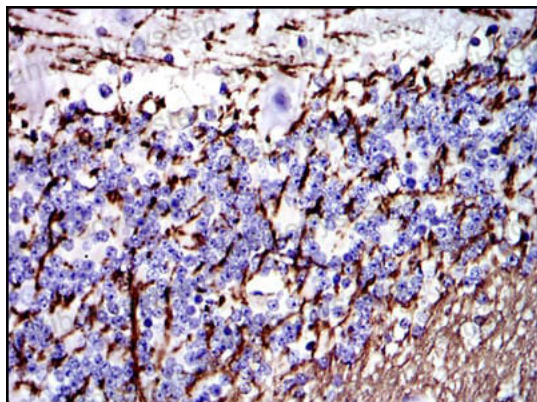
Immunofluorescence

Immunofluorescence analysis of MSCS cells using MBP mouse mAb (green). Blue: DRAQ5 fluorescent DNA dye. Red: Actin filaments have been labeled with Alexa Fluor-555 phalloidin.



Immunohistochemical

Immunohistochemical analysis of paraffin-embedded human brain tissues using MBP mouse mAb with DAB staining.



Immunohistochemical

Immunohistochemical analysis of paraffin-embedded human cerebellum tissues using MBP mouse mAb with DAB staining.