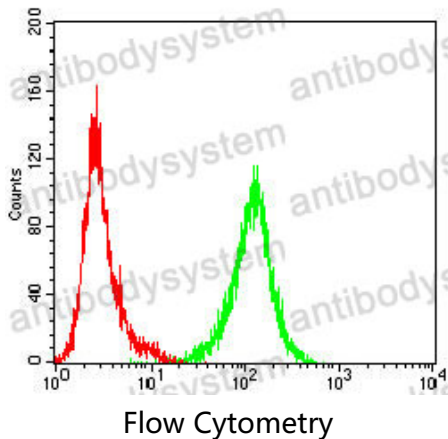


Anti-IL1A/IL1F1 Antibody (R2X45)

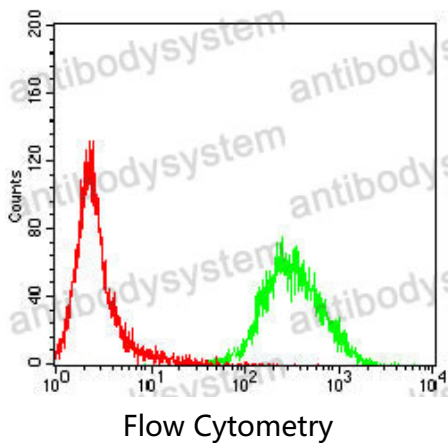
Summary

Catalog No.	RHB95501
Clone ID	R2X45
Host species	Mouse
Tested applications	ELISA: 1:10000, FCM: 1:200-1:400
Species reactivity	Human
Form	Liquid
Storage buffer	0.01M PBS, pH 7.4, 0.05% Sodium Azide.
Concentration	1 mg/ml
Purity	>95% as determined by SDS-PAGE.
Clonality	Monoclonal
Isotype	IgG1
Applications	ELISA, FCM
Target	IL1F1, Interleukin-1 alpha, IL1A, Hematopoietin-1, IL-1 alpha
Purification	Protein A/G purified from cell culture supernatant.
Endotoxin level	Please contact with the lab for this information.
Accession	P01583
Stability and Storage	Use a manual defrost freezer and avoid repeated freeze-thaw cycles. Store at 4°C short term (1-2 weeks). Store at -20°C 12 months. Store at -80°C long term.
Note	For research use only.

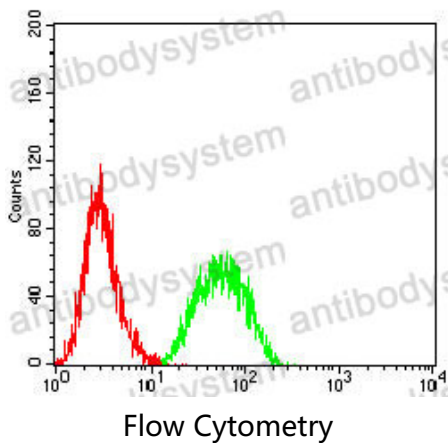
Data Image



Flow cytometric analysis of Jurkat cells using IL1A mouse mAb (green) and negative control (red).



Flow cytometric analysis of MOLT4 cells using IL1A mouse mAb (green) and negative control (red).



Flow cytometric analysis of THP-1 cells using IL1A mouse mAb (green) and negative control (red).