

# Anti-EGFR/ERBB1/HER1 Antibody (R2W81)

## Summary

---

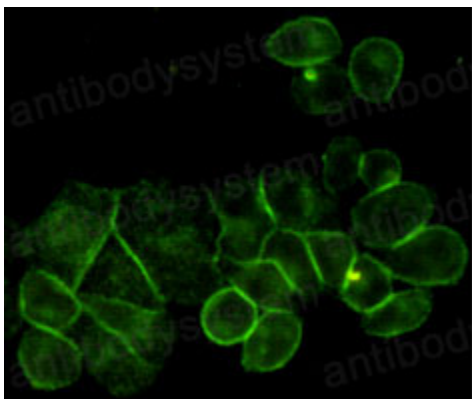
<b>Catalog No.</b>	RHB86922
<b>Clone ID</b>	R2W81
<b>Host species</b>	Mouse
<b>Tested applications</b>	IF: 1:50-1:200, IP: 1:20, WB: 1:500-1:1000
<b>Species reactivity</b>	Human, Monkey
<b>Form</b>	Liquid
<b>Storage buffer</b>	0.01M PBS, pH 7.4, 0.5% BSA, 0.05% Sodium Azide and 50% Glycerol.
<b>Concentration</b>	1 mg/ml
<b>Purity</b>	>95% as determined by SDS-PAGE.
<b>Clonality</b>	Monoclonal
<b>Isotype</b>	IgG1
<b>Applications</b>	IF, IP, WB
<b>Target</b>	HER1, Receptor tyrosine-protein kinase erbB-1, Proto-oncogene c-ErbB-1, Epidermal growth factor receptor, EGFR, ERBB1, ERBB
<b>Purification</b>	Protein A/G purified from cell culture supernatant.
<b>Endotoxin level</b>	Please contact with the lab for this information.
<b>Accession</b>	P00533
<b>Stability and Storage</b>	Use a manual defrost freezer and avoid repeated freeze-thaw cycles. Store at 4°C short term (1-2 weeks). Store at -20°C 12 months. Store at -80°C long term.

**Note**

For research use only.

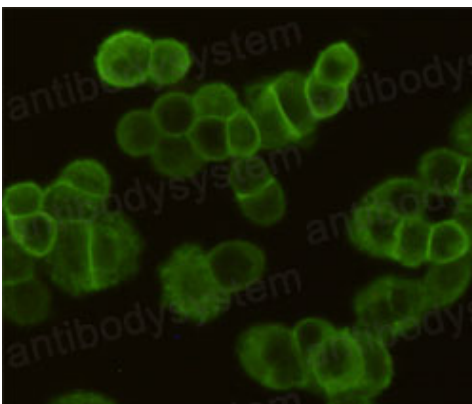
## Data Image

---



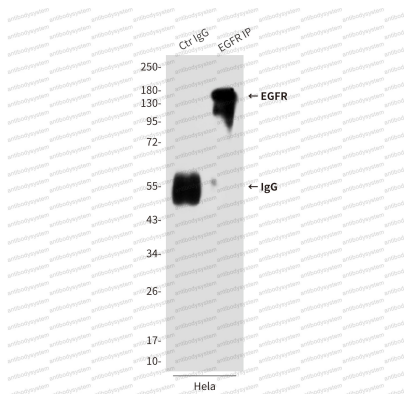
Immunofluorescence

Immunocytochemistry analysis of EGFR in HeLa using EGFR antibody.



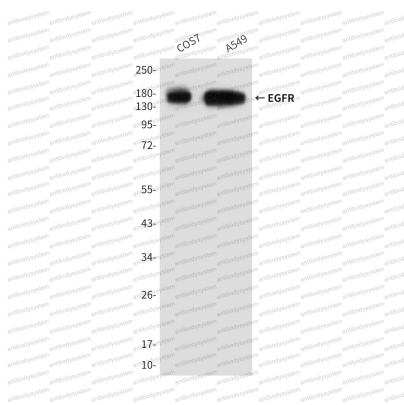
Immunofluorescence

Immunocytochemistry analysis of EGFR in MDA-MB-468 cells using EGFR antibody.



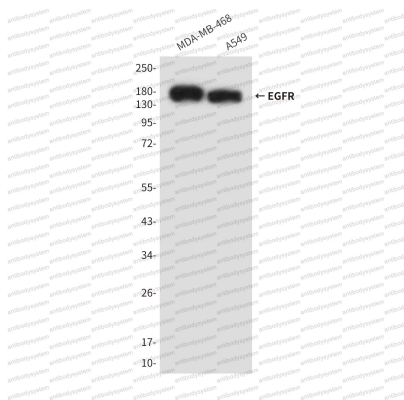
Immunoprecipitation

Immunoprecipitation analysis of EGFR in HeLa lysates using EGFR antibody.



Western blot

Western blot analysis of EGFR in A549 and COS7 lysates using EGFR antibody.



Western blot

Western blot analysis of EGFR in A549 and MDA-MB-468 lysates using EGFR antibody.