

Recombinant Human GOT1 Protein, N-His

Summary

Catalog No.	YHD22901
Alternative Names	GOT1, Cysteine aminotransferase, cytoplasmic, Aspartate aminotransferase, cytoplasmic, Glutamate oxaloacetate transaminase 1, Cysteine transaminase, cytoplasmic, Transaminase A, cAspAT, cCAT
Form	Lyophilized
Storage buffer	Lyophilized from a solution in PBS pH 7.4, 0.02% NLS, 1mM EDTA, 4% Trehalose, 1% Mannitol.
Purity	>90% as determined by SDS-PAGE.
Applications	ELISA, Immunogen, SDS-PAGE, WB, Bioactivity testing in progress
Endotoxin level	Please contact with the lab for this information.
Expression system	E. coli
Accession	P17174
Protein length	Met1-Gln413
Nature	Recombinant
Predicted molecular weight	48.56 kDa
Stability and Storage	Use a manual defrost freezer and avoid repeated freeze thaw cycles. Store at 2 to 8°C for frequent use. Store at -20 to -80°C for twelve months from the date of receipt.
Reconstitution	Reconstitute in sterile water for a stock solution. A copy of datasheet will be provided with the products, please refer to it for details.
Species	Homo sapiens (Human)

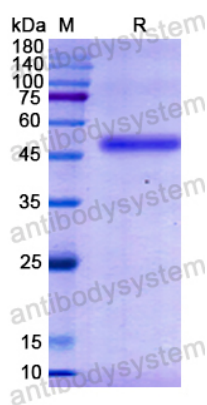
Shipping

In general, proteins are provided as lyophilized powder/frozen liquid. They are shipped out with dry ice/blue ice unless customers require otherwise.

Note

For research use only.

Data Image



SDS-PAGE

SDS PAGE for recombinant Human GOT1