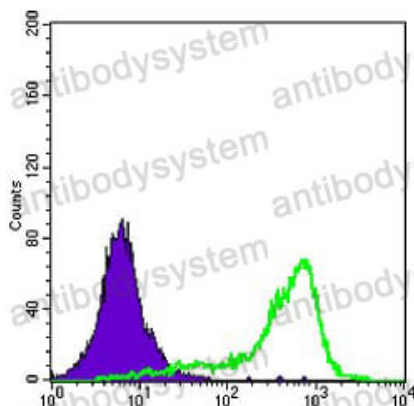


Anti-SOD1 Antibody (R2W69)

Summary

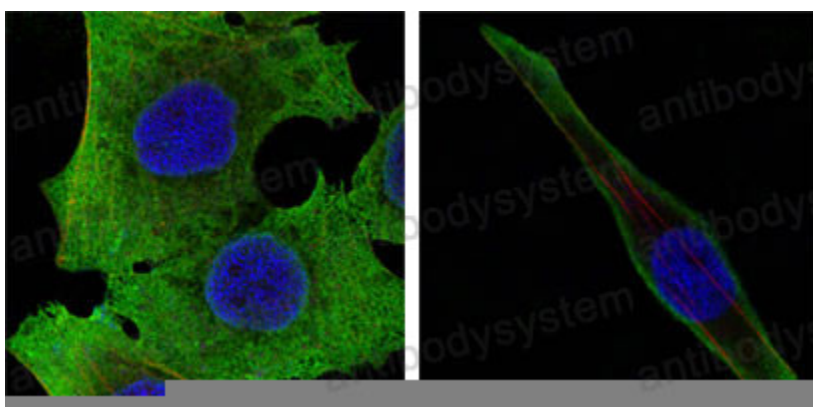
Catalog No.	RHB86005
Clone ID	R2W69
Host species	Mouse
Tested applications	FCM: 1:200-1:400, IF: 1:200-1:1000, WB: 1:500-1:2000
Species reactivity	Human, Mouse
Form	Liquid
Storage buffer	0.01M PBS, pH 7.4, 0.05% Sodium Azide.
Concentration	1 mg/ml
Purity	>95% as determined by SDS-PAGE.
Clonality	Monoclonal
Isotype	IgG1
Applications	FCM, IF, WB
Target	Superoxide dismutase [Cu-Zn], SOD1, hSod1, Superoxide dismutase 1
Purification	Protein A/G purified from cell culture supernatant.
Endotoxin level	Please contact with the lab for this information.
Accession	P00441
Stability and Storage	Use a manual defrost freezer and avoid repeated freeze-thaw cycles. Store at 4°C short term (1-2 weeks). Store at -20°C 12 months. Store at -80°C long term.
Note	For research use only.

Data Image



Flow Cytometry

Flow cytometric analysis of A431 cells using SOD1 mouse mAb (green) and negative control (purple).



Immunofluorescence

Confocal Immunofluorescence analysis of PANC-1 (left) and SKBR-3 (right) cells using SOD1 mouse mAb (green). Red: Actin filaments have been labeled with DY-554 phalloidin. Blue: DRAQ5 fluorescent DNA dye.



Immunofluorescence

Confocal Immunofluorescence analysis of 3T3-L1 cells using SOD1 mouse mAb (green). Blue: DRAQ5 fluorescent DNA dye.



Western blot

Western blot analysis using SOD1 mouse mAb against HeLa (1), NIH/3T3 (2), A549 (3) and A431 (4) cell lysate.