

# Anti-AIFM1/AIF Antibody (R2W44)

## Summary

---

<b>Catalog No.</b>	RHB76001
<b>Clone ID</b>	R2W44
<b>Host species</b>	Mouse
<b>Tested applications</b>	ELISA: 1:10000, FCM: 1:200-1:400, IF: 1:200-1:1000, IHC: 1:200-1:1000, WB: 1:500-1:2000
<b>Species reactivity</b>	Human, Mouse, Rat, Monkey
<b>Form</b>	Liquid
<b>Storage buffer</b>	0.01M PBS, pH 7.4, 0.05% Sodium Azide.
<b>Concentration</b>	1 mg/ml
<b>Purity</b>	>95% as determined by SDS-PAGE.
<b>Clonality</b>	Monoclonal
<b>Isotype</b>	IgG2b
<b>Applications</b>	ELISA, FCM, IF, IHC, WB
<b>Target</b>	AIFM1, AIF, Programmed cell death protein 8, PDCD8, Apoptosis-inducing factor 1, mitochondrial
<b>Purification</b>	Protein A/G purified from cell culture supernatant.
<b>Endotoxin level</b>	Please contact with the lab for this information.
<b>Accession</b>	O95831

**Stability and Storage**

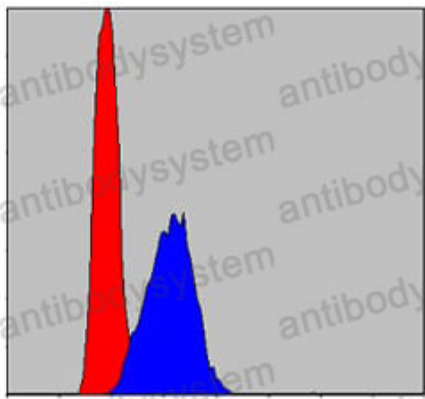
Use a manual defrost freezer and avoid repeated freeze-thaw cycles.  
Store at 4°C short term (1-2 weeks). Store at -20°C 12 months. Store at -80°C long term.

**Note**

For research use only.

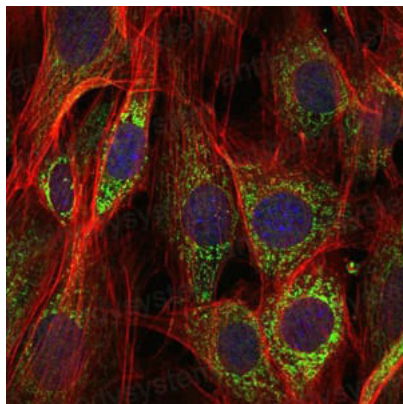
**Data Image**

---



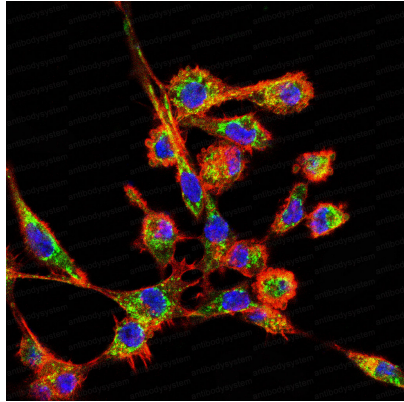
Flow Cytometry

Flow cytometric analysis of HepG2 cells using a negative control (red).



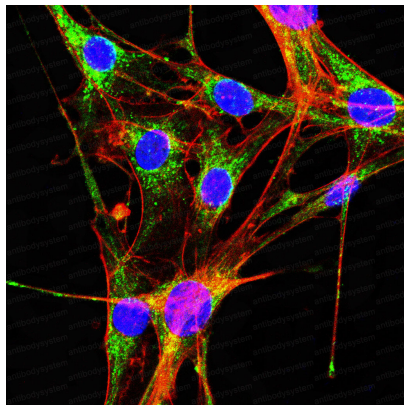
Immunofluorescence

Immunofluorescence analysis of NIH/3T3 cells. Blue: DRAQ5 fluorescent DNA dye. Red: Actin stained with Alexa Fluor-555 phalloidin.



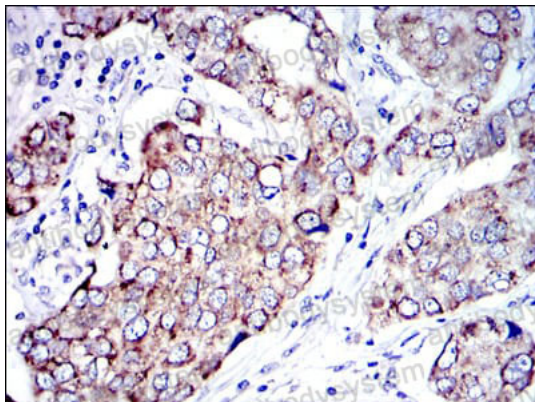
Immunofluorescence

Immunofluorescence analysis of RSC-96 cells.  
Blue: DRAQ5 fluorescent DNA dye. Red: Actin  
with Alexa Fluor- 555 phalloidin.



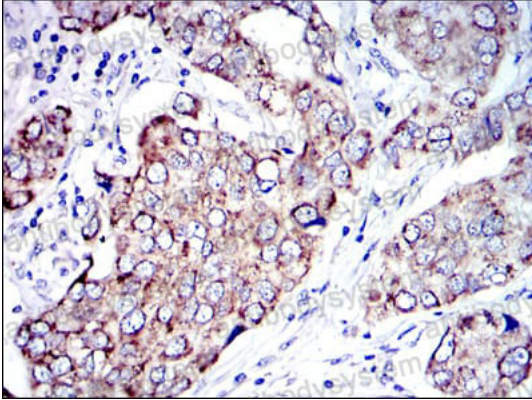
Immunofluorescence

Immunofluorescence analysis of NIH3T3 cells.  
Blue: DRAQ5 fluorescent DNA dye. Red: Actin  
with Alexa Fluor- 555 phalloidin.



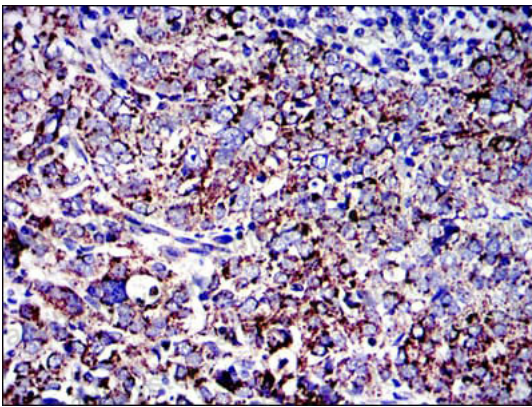
Immunohistochemical

Immunohistochemical analysis of paraffin-embedded  
tissues using AIF mouse mAb with DAB staining.



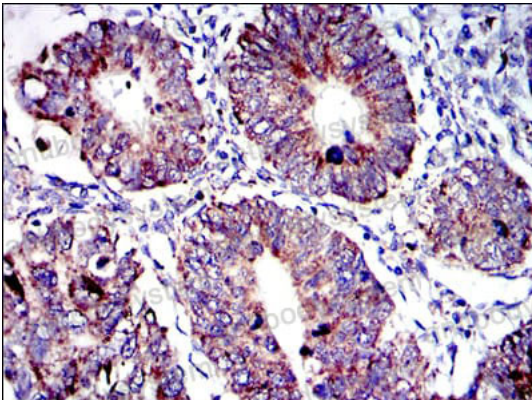
Immunohistochemical

Immunohistochemical analysis of paraffin-embedded tissues using AIF mouse mAb with DAB staining



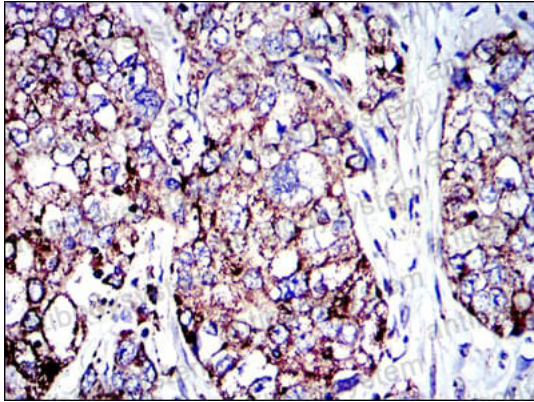
Immunohistochemical

Immunohistochemical analysis of paraffin-embedded tissues using AIF mouse mAb with DAB staining



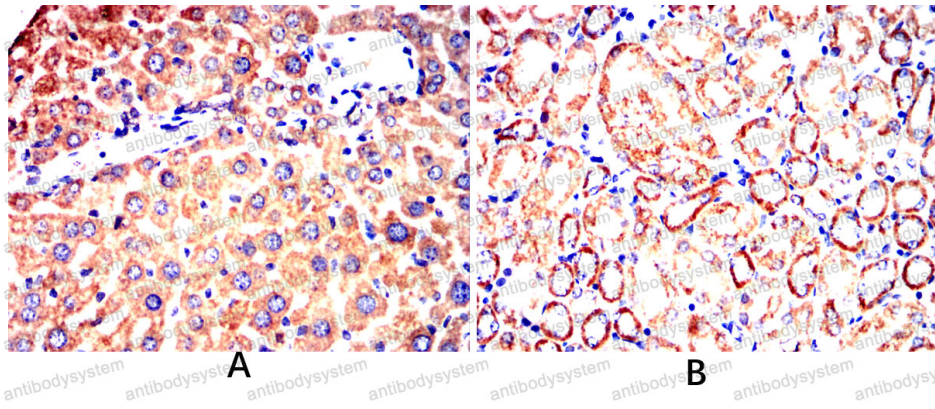
Immunohistochemical

Immunohistochemical analysis of paraffin-embedded tissues using AIF mouse mAb with DAB staining



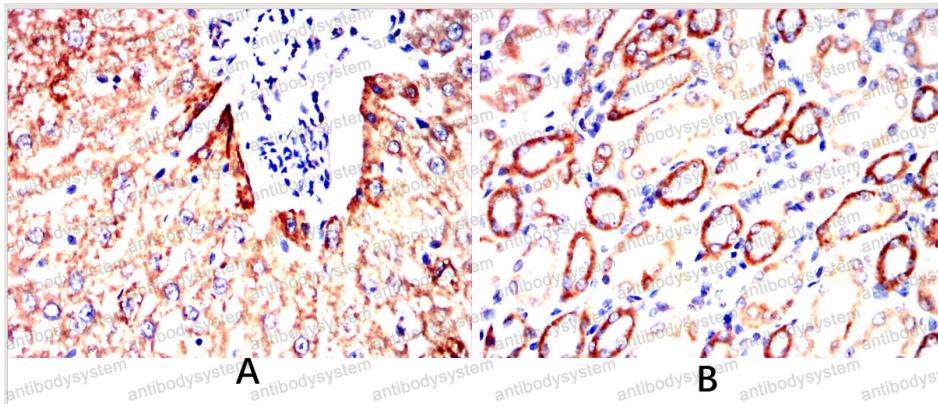
Immunohistochemical

Immunohistochemical analysis of paraffin-embedded tissues using AIF mouse mAb with DAB stain



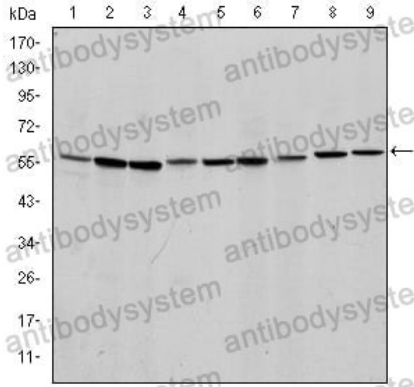
Immunohistochemical

Immunohistochemical analysis of paraffin-embedded kidney(B) using AIF mouse mAb with DAB stain



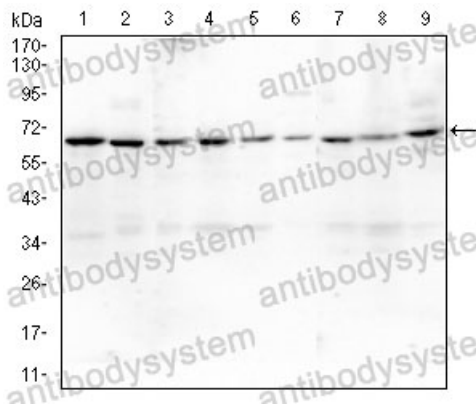
Immunohistochemical

Immunohistochemical analysis of paraffin-embedded kidney(B) using AIF mouse mAb with DAB stain



Western blot

Western blot analysis using AIF mouse mAb in HeLa (3), HepG2 (4), MOLT4 (5), C6 (6), RAJI (7) cell lysate.



Western blot

Western blot analysis using AIF mouse mAb in CHO3D10(1), COS7(2), F9(3), L1210(4), C6(5), C127(6), 12(9) cell lysate.