

# Anti-ATG7 Antibody (R2W27)

## Summary

---

<b>Catalog No.</b>	RHB61603
<b>Clone ID</b>	R2W27
<b>Host species</b>	Mouse
<b>Tested applications</b>	IHC: 1:50-1:100
<b>Species reactivity</b>	Human, Mouse, Rat
<b>Form</b>	Liquid
<b>Storage buffer</b>	0.01M PBS, pH 7.4, 0.5% BSA, 0.05% Sodium Azide and 50% Glycerol.
<b>Concentration</b>	1 mg/ml
<b>Purity</b>	>95% as determined by SDS-PAGE.
<b>Clonality</b>	Monoclonal
<b>Isotype</b>	IgG1
<b>Applications</b>	IHC
<b>Target</b>	hAGP7, ATG7, Ubiquitin-activating enzyme E1-like protein, APG7L, Ubiquitin-like modifier-activating enzyme ATG7, Autophagy-related protein 7, ATG12-activating enzyme E1 ATG7, APG7-like
<b>Purification</b>	Protein A/G purified from cell culture supernatant.
<b>Endotoxin level</b>	Please contact with the lab for this information.
<b>Accession</b>	O95352

**Stability and Storage**

Use a manual defrost freezer and avoid repeated freeze-thaw cycles.

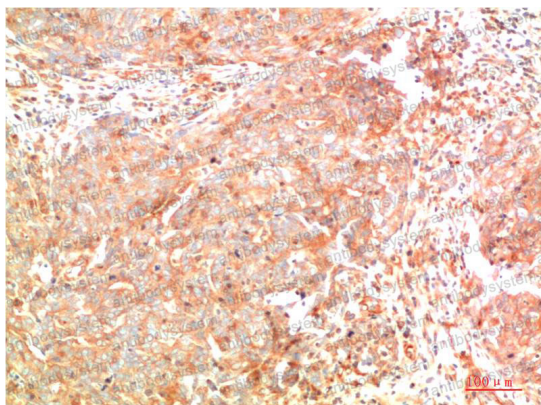
Store at 4°C short term (1-2 weeks). Store at -20°C 12 months. Store at -80°C long term.

**Note**

For research use only.

**Data Image**

---



Immunohistochemical

Immunohistochemistry analysis of paraffin-embedded Human Breast Carcinoma Tissue using ATG7 antibody. High-pressure and temperature Sodium Citrate pH 6.0 was used for antigen retrieval.