

Anti-CD335/NCR1/NKp46 Antibody (R2W01)

Summary

| | |
|----------------------------|---|
| Catalog No. | RHB39501 |
| Clone ID | R2W01 |
| Host species | Mouse |
| Tested applications | ELISA: 1:10000, FCM: 1:200-1:400 |
| Species reactivity | Human |
| Form | Liquid |
| Storage buffer | 0.01M PBS, pH 7.4, 0.05% Sodium Azide. |
| Concentration | 1 mg/ml |
| Purity | >95% as determined by SDS-PAGE. |
| Clonality | Monoclonal |
| Isotype | IgG1 |
| Applications | ELISA, FCM |
| Target | LY94, Natural cytotoxicity triggering receptor 1, Natural killer cell p46-related protein, NK cell-activating receptor, NK-p46, CD335, NKp46, NCR1, hNKp46, Lymphocyte antigen 94 homolog |
| Purification | Protein A/G purified from cell culture supernatant. |
| Endotoxin level | Please contact with the lab for this information. |
| Accession | O76036 |

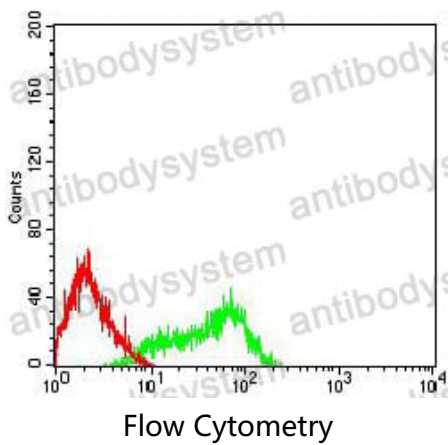
Stability and Storage

Use a manual defrost freezer and avoid repeated freeze-thaw cycles.
Store at 4°C short term (1-2 weeks). Store at -20°C 12 months. Store at -80°C long term.

Note

For research use only.

Data Image



Flow cytometric analysis of HL-60 cells using CD335 mouse mAb (green) and negative control (red).