

Anti-CD85i/LILRA1 Antibody (R2V45)

Summary

Catalog No.	RHB05802
Clone ID	R2V45
Host species	Mouse
Tested applications	ELISA: 1:10000, FCM: 1:200-1:400
Species reactivity	Human
Form	Liquid
Storage buffer	0.01M PBS, pH 7.4, 0.05% Sodium Azide.
Concentration	1 mg/ml
Purity	>95% as determined by SDS-PAGE.
Clonality	Monoclonal
Isotype	IgG2a
Applications	ELISA, FCM
Target	LIR-6, Leukocyte immunoglobulin-like receptor subfamily A member 1, LILRA1, Leukocyte immunoglobulin-like receptor 6, CD85i, LIR6, CD85 antigen-like family member I
Purification	Protein A/G purified from cell culture supernatant.
Endotoxin level	Please contact with the lab for this information.
Accession	O75019

Recombinant Proteins & Antibodies

Stability and Storage

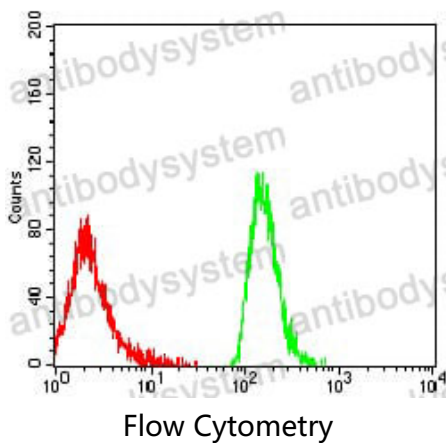
Use a manual defrost freezer and avoid repeated freeze-thaw cycles.

Store at 4°C short term (1-2 weeks). Store at -20°C 12 months. Store at -80°C long term.

Note

For research use only.

Data Image



Flow cytometric analysis of MOLT4 cells using LILRA1 mouse mAb (green) and negative control (red).