

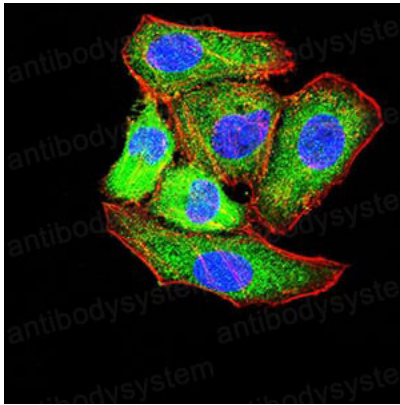
Anti-CD282/TLR2 Antibody (R2V32)

Summary

Catalog No.	RMA95504
Clone ID	R2V32
Host species	Mouse
Tested applications	ELISA: 1:10000, IF: 1:200-1:1000
Species reactivity	Human, Mouse
Form	Liquid
Storage buffer	0.01M PBS, pH 7.4, 0.05% Sodium Azide.
Concentration	1 mg/ml
Purity	>95% as determined by SDS-PAGE.
Clonality	Monoclonal
Isotype	IgG1
Applications	ELISA, IF
Target	TIL4, Toll-like receptor 2, TLR2, Toll/interleukin-1 receptor-like protein 4, CD282
Purification	Protein A/G purified from cell culture supernatant.
Endotoxin level	Please contact with the lab for this information.
Accession	O60603, Q9QUN7
Stability and Storage	Use a manual defrost freezer and avoid repeated freeze-thaw cycles. Store at 4°C short term (1-2 weeks). Store at -20°C 12 months. Store at -80°C long term.

Note For research use only.

Data Image



Immunofluorescence

Immunofluorescence analysis of HepG2 cells using Tlr2 mouse mAb (green). Blue: DRAQ5 fluorescent DNA dye. Red: Actin filaments have been labeled with Alexa Fluor- 555 phalloidin.