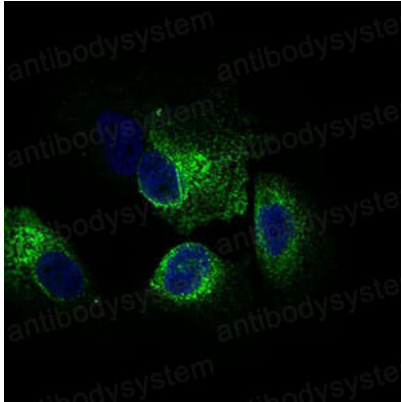


Anti-CLGN/Calmegin Antibody (R2U21)

Summary

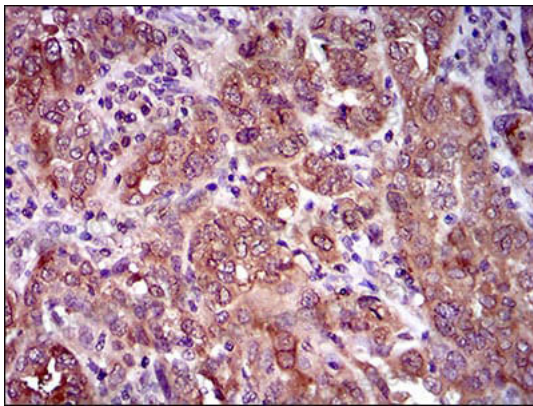
Catalog No.	RHA36302
Clone ID	R2U21
Host species	Mouse
Tested applications	ELISA: 1:10000, IF: 1:200-1:1000, IHC: 1:200-1:1000, WB: 1:500-1:2000
Species reactivity	Human
Form	Liquid
Storage buffer	0.01M PBS, pH 7.4, 0.05% Sodium Azide.
Concentration	1 mg/ml
Purity	>95% as determined by SDS-PAGE.
Clonality	Monoclonal
Isotype	IgG1
Applications	ELISA, IF, IHC, WB
Target	CLGN, Calmegin
Purification	Protein A/G purified from cell culture supernatant.
Endotoxin level	Please contact with the lab for this information.
Accession	O14967
Stability and Storage	Use a manual defrost freezer and avoid repeated freeze-thaw cycles. Store at 4°C short term (1-2 weeks). Store at -20°C 12 months. Store at -80°C long term.
Note	For research use only.

Data Image



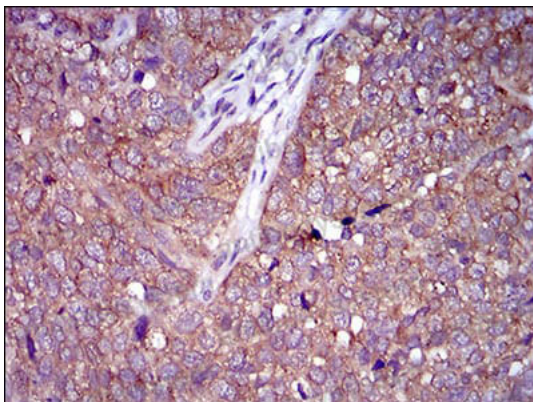
Immunofluorescence

Immunofluorescence analysis of Hela cells using CLGN mouse mAb (green). Blue: DRAQ5 fluorescent DNA dye. Red: Actin filaments have been labeled with Alexa Fluor-555 phalloidin.



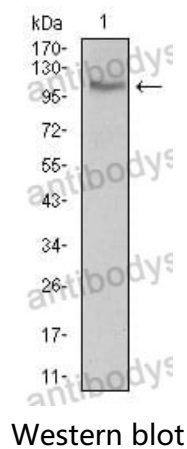
Immunohistochemical

Immunohistochemical analysis of paraffin-embedded human endometrial cancer tissues using CLGN mouse mAb with DAB staining.



Immunohistochemical

Immunohistochemical analysis of paraffin-embedded human bladder cancer tissues using CLGN mouse mAb with DAB staining.



Western blot analysis using CLGN mouse mAb against LNCAP cell lysate.