

Anti-NDC80/HEC1 Antibody (R2T90)

Summary

Catalog No.	RHA29904
Clone ID	R2T90
Host species	Mouse
Tested applications	ELISA: 1:10000, FCM: 1:200-1:400, IHC: 1:200-1:1000, WB: 1:500-1:2000
Species reactivity	Human
Form	Liquid
Storage buffer	0.01M PBS, pH 7.4, 0.05% Sodium Azide.
Concentration	1 mg/ml
Purity	>95% as determined by SDS-PAGE.
Clonality	Monoclonal
Isotype	IgG1
Applications	ELISA, FCM, IHC, WB
Target	HEC1, Kinetochores protein Hec1, HsHec1, HEC, Kinetochores protein NDC80 homolog, Kinetochores-associated protein 2, NDC80, Highly expressed in cancer protein, Retinoblastoma-associated protein HEC, KNTC2
Purification	Protein A/G purified from cell culture supernatant.
Endotoxin level	Please contact with the lab for this information.
Accession	O14777

Stability and Storage

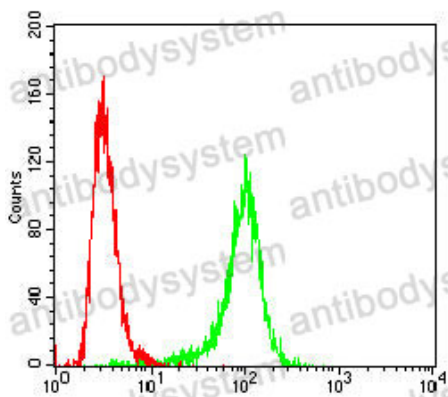
Use a manual defrost freezer and avoid repeated freeze-thaw cycles.

Store at 4°C short term (1-2 weeks). Store at -20°C 12 months. Store at -80°C long term.

Note

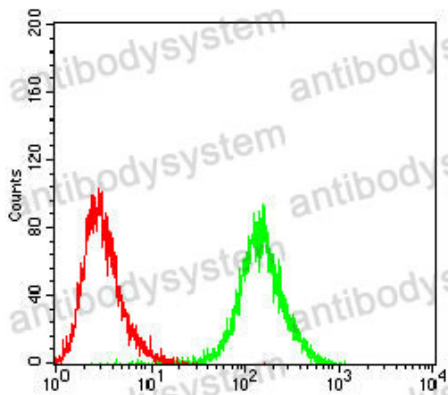
For research use only.

Data Image



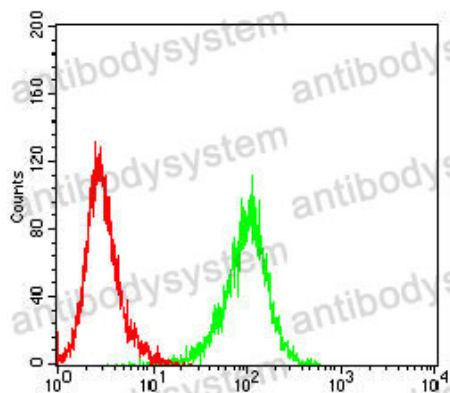
Flow Cytometry

Flow cytometric analysis of HeLa cells using NDC80 mouse mAb (green) and negative control (red).



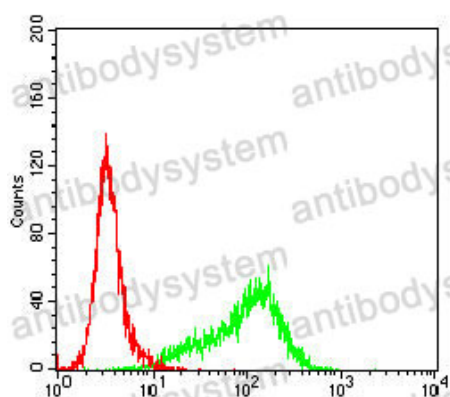
Flow Cytometry

Flow cytometric analysis of HepG2 cells using NDC80 mouse mAb (green) and negative control (red).



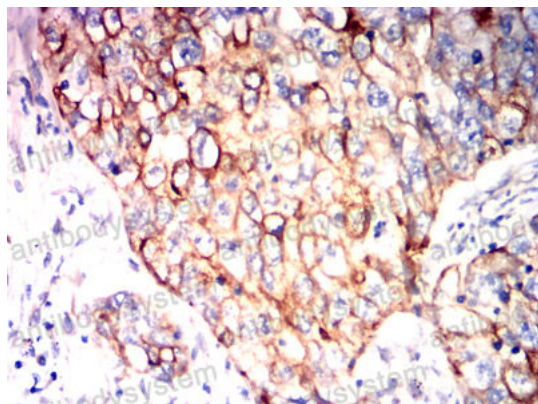
Flow Cytometry

Flow cytometric analysis of Jurkat cells using NDC80 mouse mAb (green) and negative control (red).



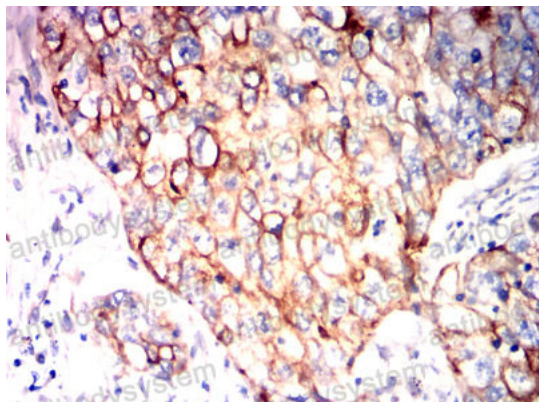
Flow Cytometry

Flow cytometric analysis of K562 cells using NDC80 mouse mAb (green) and negative control (red).



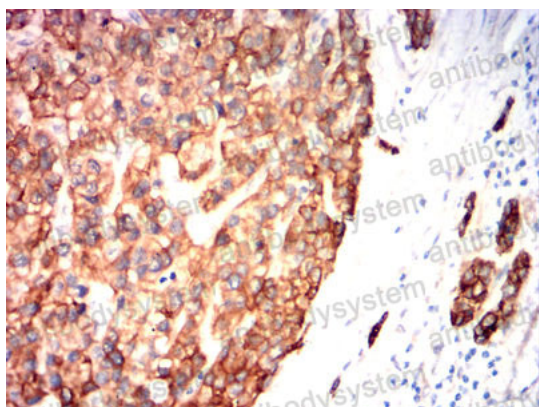
Immunohistochemical

Immunohistochemical analysis of paraffin-embedded human lung cancer tissues using NDC80 mouse mAb with DAB staining.



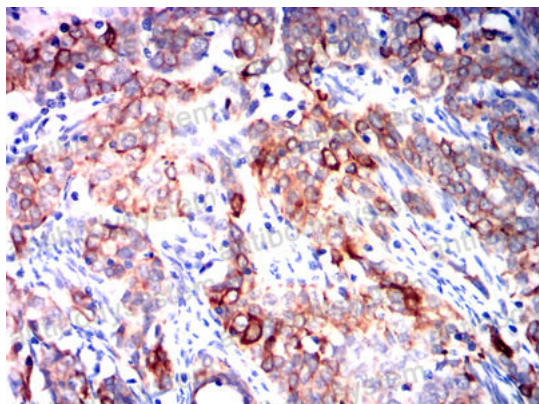
Immunohistochemical

Immunohistochemical analysis of paraffin-embedded human lung cancer tissues using NDC80 mouse mAb with DAB staining.



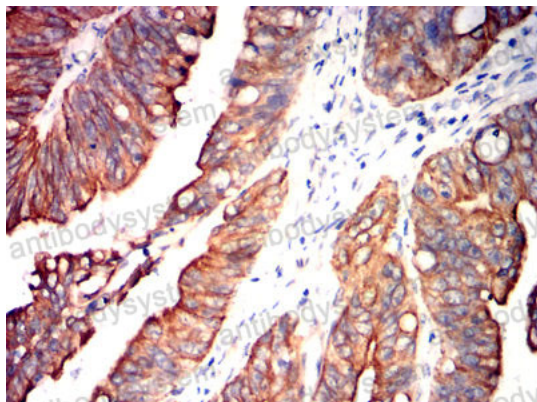
Immunohistochemical

Immunohistochemical analysis of paraffin-embedded human liver cancer tissues using NDC80 mouse mAb with DAB staining.



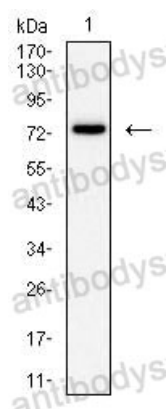
Immunohistochemical

Immunohistochemical analysis of paraffin-embedded human cervical carcinoma tissues using NDC80 mouse mAb with DAB staining.



Immunohistochemical

Immunohistochemical analysis of paraffin-embedded human rectal cancer tissues using NDC80 mouse mAb with DAB staining.



Western blot

Western blot analysis using NDC80 mouse mAb against Jurkat (1) cell lysate.