

Anti-CHEK1 Antibody (R2T88)

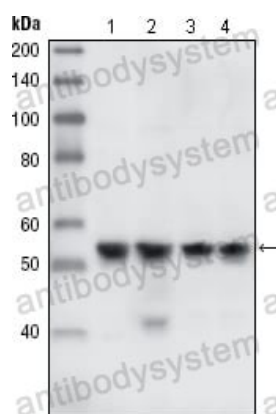
Summary

Catalog No.	RHA29002
Clone ID	R2T88
Host species	Mouse
Tested applications	WB: 1:500-1:2000
Species reactivity	Human, Mouse
Form	Liquid
Storage buffer	0.01M PBS, pH 7.4, 0.05% Sodium Azide.
Concentration	1 mg/ml
Purity	>95% as determined by SDS-PAGE.
Clonality	Monoclonal
Isotype	IgG1
Applications	WB
Target	Cell cycle checkpoint kinase, Serine/threonine-protein kinase Chk1, Checkpoint kinase-1, CHK1, CHK1 checkpoint homolog, CHEK1
Purification	Protein A/G purified from cell culture supernatant.
Endotoxin level	Please contact with the lab for this information.
Accession	O14757
Stability and Storage	Use a manual defrost freezer and avoid repeated freeze-thaw cycles. Store at 4°C short term (1-2 weeks). Store at -20°C 12 months. Store at -80°C long term.

Note

For research use only.

Data Image



Western blot

Western blot analysis using CHK1 mouse mAb against A431 (1), HeLa (2), NIH/3T3 (3) and K562 (4) cell lysate.