

Anti-SH2B2 Antibody (R2T68)

Summary

Catalog No.	RHA19501
Clone ID	R2T68
Host species	Mouse
Tested applications	ELISA: 1:10000, FCM: 1:200-1:400, IHC: 1:200-1:1000
Species reactivity	Human
Form	Liquid
Storage buffer	0.01M PBS, pH 7.4, 0.05% Sodium Azide.
Concentration	1 mg/ml
Purity	>95% as determined by SDS-PAGE.
Clonality	Monoclonal
Isotype	IgG2b
Applications	ELISA, FCM, IHC
Target	APS, SH2 and PH domain-containing adapter protein APS, SH2B2, Adapter protein with pleckstrin homology and Src homology 2 domains, SH2B adapter protein 2
Purification	Protein A/G purified from cell culture supernatant.
Endotoxin level	Please contact with the lab for this information.
Accession	O14492

Stability and Storage

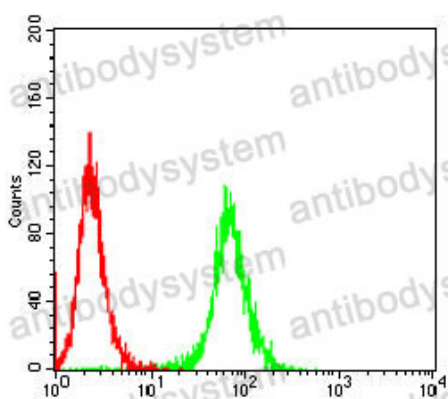
Use a manual defrost freezer and avoid repeated freeze-thaw cycles.

Store at 4°C short term (1-2 weeks). Store at -20°C 12 months. Store at -80°C long term.

Note

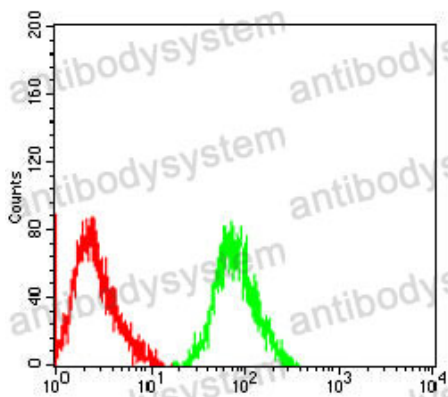
For research use only.

Data Image



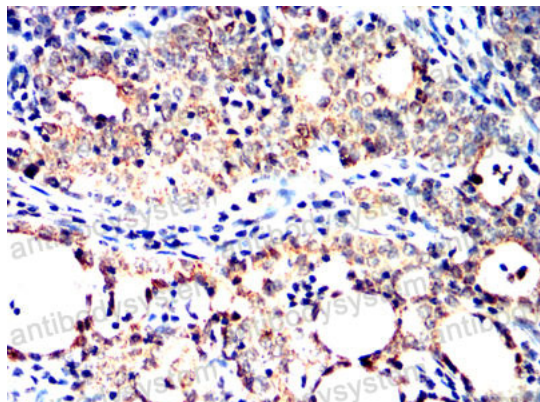
Flow Cytometry

Flow cytometric analysis of HEK293 cells using SH2B2 mouse mAb (green) and negative control (red).



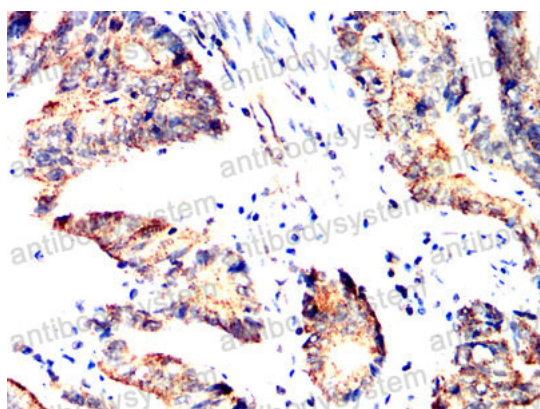
Flow Cytometry

Flow cytometric analysis of HepG2 cells using SH2B2 mouse mAb (green) and negative control (red).



Immunohistochemical

Immunohistochemical analysis of paraffin-embedded human cervical cancer tissues using SH2B2 mouse mAb with DAB staining.



Immunohistochemical

Immunohistochemical analysis of paraffin-embedded human colon cancer tissues using SH2B2 mouse mAb with DAB staining.