

Anti-IGF2BP3 Antibody (R2T45)

Summary

Catalog No.	RHA11402
Clone ID	R2T45
Host species	Mouse
Tested applications	ELISA: 1:10000, FCM: 1:200-1:400, WB: 1:500-1:2000
Species reactivity	Human, Monkey
Form	Liquid
Storage buffer	0.01M PBS, pH 7.4, 0.05% Sodium Azide.
Concentration	1 mg/ml
Purity	>95% as determined by SDS-PAGE.
Clonality	Monoclonal
Isotype	IgG1
Applications	ELISA, FCM, WB
Target	Insulin-like growth factor 2 mRNA-binding protein 3, VICKZ3, IGF2BP3, IMP3, KH domain-containing protein overexpressed in cancer, IMP-3, VICKZ family member 3, IGF-II mRNA-binding protein 3, KOC1, hKOC, IGF2 mRNA-binding protein 3
Purification	Protein A/G purified from cell culture supernatant.
Endotoxin level	Please contact with the lab for this information.
Accession	O00425

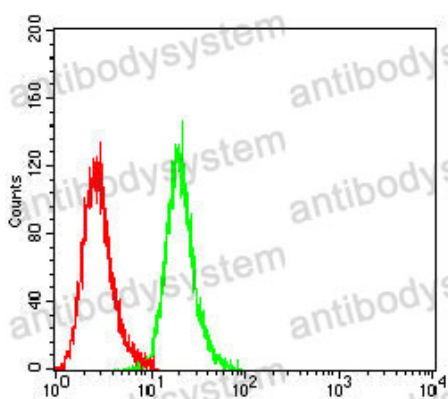
Stability and Storage

Use a manual defrost freezer and avoid repeated freeze-thaw cycles.

Store at 4°C short term (1-2 weeks). Store at -20°C 12 months. Store at -80°C long term.

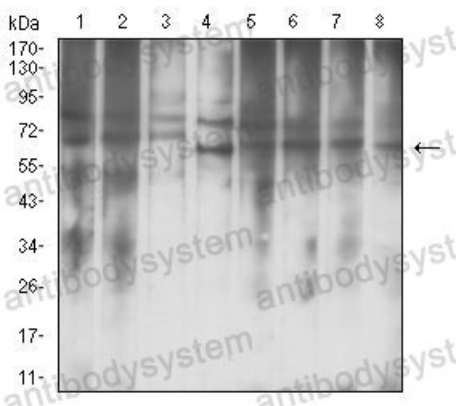
Note

For research use only.

Data Image

Flow Cytometry

Flow cytometric analysis of Hela cells using IGF2BP3 mouse mAb (green) and negative control (red).



Western blot

Western blot analysis using IGF2BP3 mouse mAb against Hela (1), Jurkat (2), NIH/3T3 (3), COS7 (4), HepG2 (5), K562 (6), A549 (7), and HEK293 (8) cell lysate.