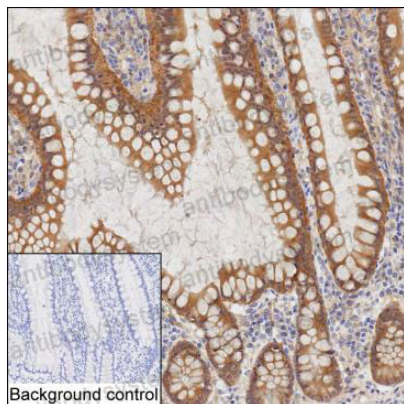


Anti-WASL Antibody (R2T42)

Summary

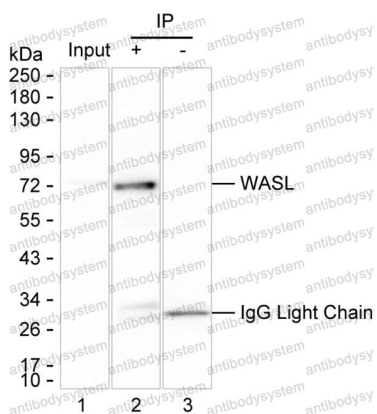
Catalog No.	RHA10503
Clone ID	R2T42
Host species	Mouse
Tested applications	IHC: 1:100-1:200, IP: 1:100-1:200
Species reactivity	Human, Mouse
Form	Liquid
Storage buffer	0.01M PBS, pH 7.4, 0.05% Sodium Azide.
Concentration	1 mg/ml
Purity	>95% as determined by SDS-PAGE.
Clonality	Monoclonal
Isotype	IgG2a
Applications	IHC, IP
Target	N-WASP, WASL, Neural Wiskott-Aldrich syndrome protein
Purification	Protein A/G purified from cell culture supernatant.
Endotoxin level	Please contact with the lab for this information.
Accession	O00401
Stability and Storage	Use a manual defrost freezer and avoid repeated freeze-thaw cycles. Store at 4°C short term (1-2 weeks). Store at -20°C 12 months. Store at -80°C long term.
Note	For research use only.

Data Image



Immunohistochemical

IHC-P analysis of small intestine tissue by WASL antibody (RHA10503). IHC-P was performed using sections of the formalin-fixed paraffin-embedded small intestine tissue; Result: Glandular cells are positively stained at the cytoplasm and nuclei.



Immunoprecipitation

Lane 1: Mouse brain tissue lysate ; Lane 2: WASL immunoprecipitated from mouse brain tissue lysate by RHA10503; Lane 3: The same Lane 2 but use IgG isotype control antibody ; Result: RHA10503 can immunoprecipitate WASL;