

Anti-WWP2 Antibody (R2T39)

Summary

Catalog No.	RHA08901
Clone ID	R2T39
Host species	Mouse
Tested applications	IP: 1:100-1:200, WB: 1:500-1:1000
Species reactivity	Human
Form	Liquid
Storage buffer	0.01M PBS, pH 7.4, 0.05% Sodium Azide.
Concentration	1 mg/ml
Purity	>95% as determined by SDS-PAGE.
Clonality	Monoclonal
Isotype	IgG2a
Applications	IP, WB
Target	Atrophin-1-interacting protein 2, WWP2, AIP2, WW domain-containing protein 2, HECT-type E3 ubiquitin transferase WWP2, NEDD4-like E3 ubiquitin-protein ligase WWP2
Purification	Protein A/G purified from cell culture supernatant.
Endotoxin level	Please contact with the lab for this information.
Accession	O00308

Stability and Storage

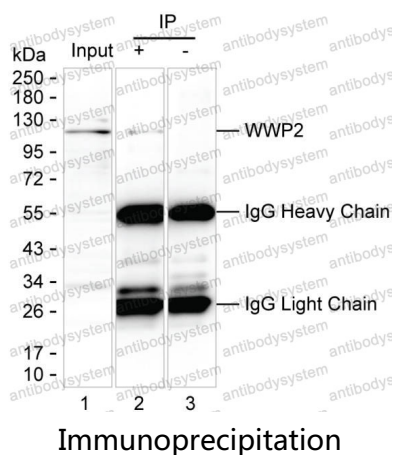
Use a manual defrost freezer and avoid repeated freeze-thaw cycles.

Store at 4°C short term (1-2 weeks). Store at -20°C 12 months. Store at -80°C long term.

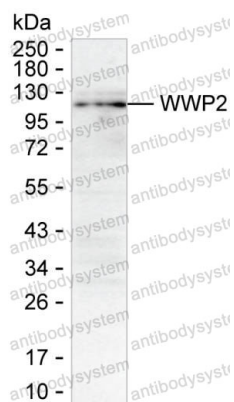
Note

For research use only.

Data Image



Lane 1: Jurkat lysate; Lane 2: WWP2 immunoprecipitated from Jurkat lysate by RHA08901; Lane 3: The same as Lane 2 but use IgG isotype control antibody ;Result: RHA08901 can immunoprecipitate WWP2;



Western blot analysis using WWP2 mouse mAb against Jurkat lysate