

Research Grade Sintilimab

Summary

Catalog No.	DHH02207
Alternative Names	IBI-308, CAS: 2072873-06-2
Clone ID	Sintilimab
Host species	Human
Species reactivity	Human
Form	Liquid
Storage buffer	0.01M PBS, pH 7.4.
Concentration	1.57 mg/ml
Purity	>95% as determined by SDS-PAGE.
Clonality	Monoclonal
Isotype	IgG4-kappa
Applications	Research Grade Biosimilar
Target	Programmed cell death protein 1, Protein PD-1, hPD-1, PD1, PDCD1, CD279
Purification	Protein A/G purified from cell culture supernatant.
Endotoxin level	Please contact with the lab for this information.
Expression system	Mammalian Cells
Accession	Q15116

Stability and Storage

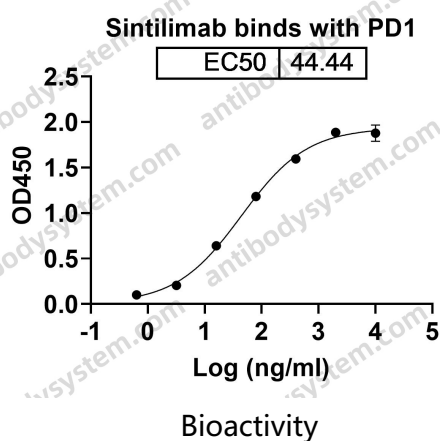
Use a manual defrost freezer and avoid repeated freeze-thaw cycles.

Store at 4°C short term (1-2 weeks). Store at -20°C 12 months. Store at -80°C long term.

Note

For research use only. Not suitable for clinical or therapeutic use.

Data Image

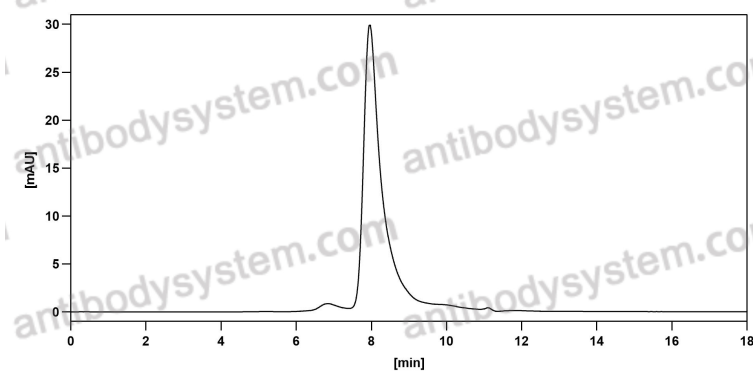


Detects Human CD279/PDCD1/PD1 in indirect ELISAs.



SDS PAGE for Sintilimab

Recombinant Proteins & Antibodies



The purity of this product is >95% as determined by SEC-HPLC.

SEC-HPLC