

# Anti-MRPS26 Antibody (R2S57)

## Summary

---

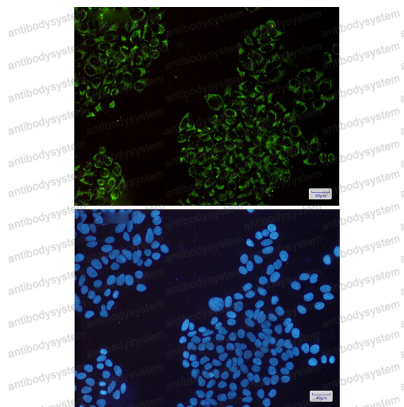
|                            |   |
|----------------------------|---|
| <b>Catalog No.</b>         | RHN85001  |
| <b>Clone ID</b>            | R2S57   |
| <b>Host species</b>        | Rabbit  |
| <b>Tested applications</b> | IF: 1:50-1:200, WB: 1:500-1:1000  |
| <b>Species reactivity</b>  | Human   |
| <b>Form</b>                | Liquid  |
| <b>Storage buffer</b>      | 0.01M PBS, pH 7.4, 0.05% BSA, 50% Glycerol, 0.05% Sodium azide.   |
| <b>Concentration</b>       | 1 mg/ml   |
| <b>Purity</b>              | >95% by SDS-PAGE.   |
| <b>Clonality</b>           | Monoclonal  |
| <b>Isotype</b>             | IgG   |
| <b>Applications</b>        | IF, WB  |
| <b>Target</b>              | RPMS13, C20orf193, Mitochondrial small ribosomal subunit protein mS26, MRPS26, 28S ribosomal protein S13, mitochondrial, S26mt, S13mt, MRP-S26, MRP-S13, 28S ribosomal protein S26, mitochondrial |
| <b>Purification</b>        | Protein A/G purified from cell culture supernatant.   |
| <b>Endotoxin level</b>     | Please contact with the lab for this information.   |
| <b>Accession</b>           | Q9BYN8  |

**Stability and Storage**

Use a manual defrost freezer and avoid repeated freeze thaw cycles. Store at 4 °C for frequent use. Store at -20 °C for twelve months from the date of receipt.

**Note**

For research use only.

**Data Image**

Immunofluorescence

Immunocytochemistry analysis of MRPS26(green) in HeLa using MRPS26 antibody, and DAPI(blue)



Western blot

Western blot analysis of MRPS26 in K562, HeLa lysates using MRPS26 antibody.