

Anti-KAT2A Antibody (R2S50)

Summary

Catalog No.	RHN84301
Clone ID	R2S50
Host species	Rabbit
Tested applications	IP: 1:20, WB: 1:500-1:1000
Species reactivity	Human
Form	Liquid
Storage buffer	0.01M PBS, pH 7.4, 0.05% BSA, 50% Glycerol, 0.05% Sodium azide.
Concentration	1 mg/ml
Purity	>95% by SDS-PAGE.
Clonality	Monoclonal
Isotype	IgG
Applications	IP, WB
Target	Histone succinyltransferase KAT2A, STAF97, GCN5L2, hGCN5, General control of amino acid synthesis protein 5-like 2, Histone acetyltransferase GCN5, Lysine acetyltransferase 2A, Histone acetyltransferase KAT2A, KAT2A, Histone glutaryltransferase KAT2A, GCN5
Purification	Protein A/G purified from cell culture supernatant.
Endotoxin level	Please contact with the lab for this information.
Accession	Q92830

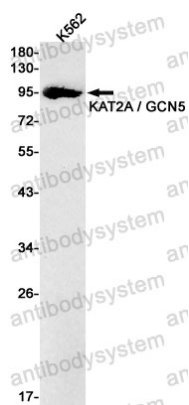
Stability and Storage

Use a manual defrost freezer and avoid repeated freeze thaw cycles. Store at 4 °C for frequent use. Store at -20 °C for twelve months from the date of receipt.

Note

For research use only.

Data Image



Western blot

Western blot analysis of KAT2A / GCN5 in K562 lysates using KAT2A antibody.