

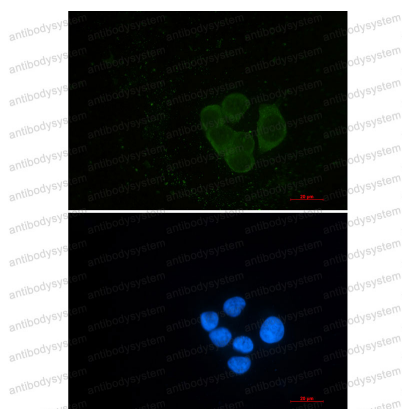
Anti-EPS15L1 Antibody (R2S46)

Summary

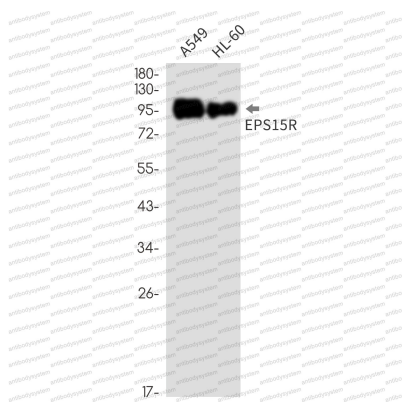
Catalog No.	RHN83901
Clone ID	R2S46
Host species	Rabbit
Tested applications	IF: 1:50-1:200, WB: 1:500-1:1000
Species reactivity	Human
Form	Liquid
Storage buffer	0.01M PBS, pH 7.4, 0.05% BSA, 50% Glycerol, 0.05% Sodium azide.
Concentration	1 mg/ml
Purity	>95% by SDS-PAGE.
Clonality	Monoclonal
Isotype	IgG
Applications	IF, WB
Target	EPS15R, Eps15-related protein, Eps15R, Epidermal growth factor receptor substrate 15-like 1, EPS15L1
Purification	Protein A/G purified from cell culture supernatant.
Endotoxin level	Please contact with the lab for this information.
Accession	Q9UBC2
Stability and Storage	Use a manual defrost freezer and avoid repeated freeze thaw cycles. Store at 4 °C for frequent use. Store at -20 °C for twelve months from the date of receipt.

Note

For research use only.

Data Image**Immunofluorescence**

Immunocytochemistry analysis of EPS15R (green) in Hela using EPS15R antibody, and DAPI(blue).

**Western blot**

Western blot analysis of EPS15R in A549, HL-60 lysates using EPS15R antibody.