

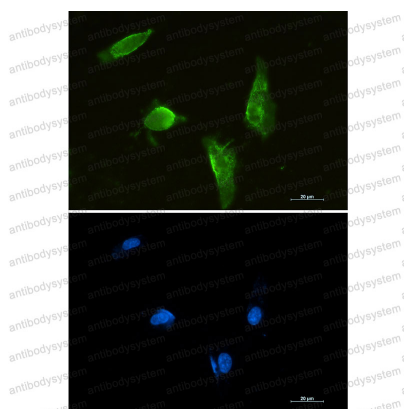
Anti-APTX Antibody (R2S23)

Summary

| | |
|------------------------------|---|
| Catalog No. | RHN81801 |
| Clone ID | R2S23 |
| Host species | Rabbit |
| Tested applications | IF: 1:50-1:200, WB: 1:500-1:1000 |
| Species reactivity | Human |
| Form | Liquid |
| Storage buffer | 0.01M PBS, pH 7.4, 0.05% BSA, 50% Glycerol, 0.05% Sodium azide. |
| Concentration | 1 mg/ml |
| Purity | >95% by SDS-PAGE. |
| Clonality | Monoclonal |
| Isotype | IgG |
| Applications | IF, WB |
| Target | AXA1, Aprataxin, APTX, Forkhead-associated domain histidine triad-like protein, FHA-HIT |
| Purification | Protein A/G purified from cell culture supernatant. |
| Endotoxin level | Please contact with the lab for this information. |
| Accession | Q7Z2E3 |
| Stability and Storage | Use a manual defrost freezer and avoid repeated freeze thaw cycles. Store at 4 °C for frequent use. Store at -20 °C for twelve months from the date of receipt. |

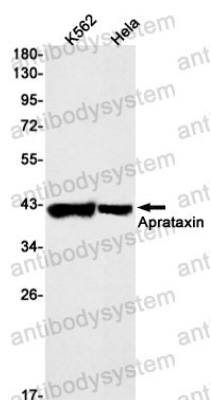
Note

For research use only.

Data Image

Immunofluorescence

Immunocytochemistry analysis of Aprataxin (green) in U87-MG using Aprataxin antibody, and DAPI (blue).



Western blot

Western blot analysis of Aprataxin in K562, HeLa lysates using Aprataxin antibody.