

Anti-CARF Antibody (R2S20)

Summary

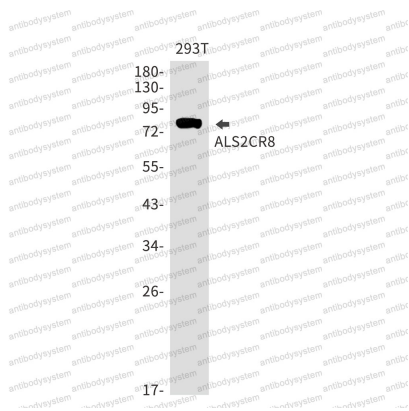
| | |
|----------------------------|---|
| Catalog No. | RHN81601 |
| Clone ID | R2S20 |
| Host species | Rabbit |
| Tested applications | WB: 1:500-1:1000 |
| Species reactivity | Human |
| Form | Liquid |
| Storage buffer | 0.01M PBS, pH 7.4, 0.05% BSA, 50% Glycerol, 0.05% Sodium azide. |
| Concentration | 1 mg/ml |
| Purity | >95% by SDS-PAGE. |
| Clonality | Monoclonal |
| Isotype | IgG |
| Applications | WB |
| Target | Calcium-responsive transcription factor, ALS2CR8, CARF, Calcium-response factor, CaRF, Testis development protein NYD-SP24, Amyotrophic lateral sclerosis 2 chromosomal region candidate gene 8 protein |
| Purification | Protein A/G purified from cell culture supernatant. |
| Endotoxin level | Please contact with the lab for this information. |
| Accession | Q8N187 |

Stability and Storage

Use a manual defrost freezer and avoid repeated freeze thaw cycles. Store at 4 °C for frequent use. Store at -20 °C for twelve months from the date of receipt.

Note

For research use only.

Data Image

Western blot

Western blot analysis of ALS2CR8 in 293T lysates using ALS2CR8 antibody.