

Anti-Phospho-PARVA/Parvin alpha (Ser8) Antibody (R2S15)

Summary

Catalog No.	RHN81101
Clone ID	R2S15
Host species	Rabbit
Tested applications	IF: 1:50-1:200, WB: 1:500-1:1000
Species reactivity	Human, Mouse, Rat
Form	Liquid
Storage buffer	0.01M PBS, pH 7.4, 0.05% BSA, 50% Glycerol, 0.05% Sodium azide.
Concentration	1 mg/ml
Purity	>95% by SDS-PAGE.
Clonality	Monoclonal
Isotype	IgG
Applications	IF, WB
Target	MXRA2, Matrix-remodeling-associated protein 2, Actopaxin, Calponin-like integrin-linked kinase-binding protein, PARVA, CH-ILKBP, Alpha-parvin
Purification	Protein A/G purified from cell culture supernatant.
Endotoxin level	Please contact with the lab for this information.
Accession	Q9NVD7

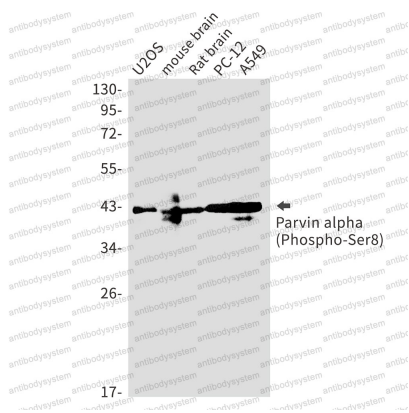
Recombinant Proteins & Antibodies

Stability and Storage

Use a manual defrost freezer and avoid repeated freeze thaw cycles. Store at 4 °C for frequent use. Store at -20 °C for twelve months from the date of receipt.

Note

For research use only.

Data Image

Western blot

Western blot analysis of Parvin alpha (Phospho-Ser8) in U2OS, mouse brain, rat brain, PC-12, A549 lysates using Phospho-Parvin alpha (Ser8) antibody.