

Anti-PPM1E Antibody (R2R53)

Summary

Catalog No.	RHN77601
Clone ID	R2R53
Host species	Rabbit
Tested applications	FCM: 1:20-1:100, WB: 1:1000-1:2000
Species reactivity	Human
Form	Liquid
Storage buffer	0.01M PBS, pH 7.4, 0.05% BSA, 50% Glycerol, 0.05% Sodium azide.
Concentration	1 mg/ml
Purity	>95% by SDS-PAGE.
Clonality	Monoclonal
Isotype	IgG
Applications	FCM, WB
Target	Partner of PIXA, Partner of PIX 1, POPX1, CaMKN, PPM1E, Ca(2+)/calmodulin-dependent protein kinase phosphatase N, CaMKP-nucleus, Partner of PIX-alpha, CAMKN, Protein phosphatase 1E, KIAA1072, CaMKP-N
Purification	Protein A/G purified from cell culture supernatant.
Endotoxin level	Please contact with the lab for this information.
Accession	Q8WY54

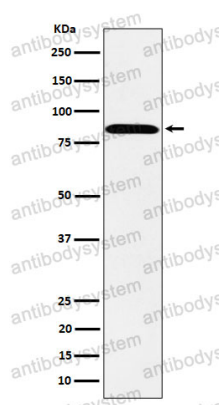
Stability and Storage

Use a manual defrost freezer and avoid repeated freeze thaw cycles. Store at 4 °C for frequent use. Store at -20 °C for twelve months from the date of receipt.

Note

For research use only.

Data Image



Western blot

Western blot analysis of PPM1E expression in SH-SY5Y cell lysate.