

Anti-ASPSCR1 Antibody (R2R43)

Summary

Catalog No.	RHN76801
Clone ID	R2R43
Host species	Rabbit
Tested applications	IHC: 1:100-1:200, WB: 1:1000-1:2000
Species reactivity	Human, Mouse, Rat
Form	Liquid
Storage buffer	0.01M PBS, pH 7.4, 0.05% BSA, 50% Glycerol, 0.05% Sodium azide.
Concentration	1 mg/ml
Purity	>95% by SDS-PAGE.
Clonality	Monoclonal
Isotype	IgG
Applications	IHC, WB
Target	Alveolar soft part sarcoma locus, Alveolar soft part sarcoma chromosomal region candidate gene 1 protein, TUG, UBX domain-containing protein 9, ASPL, ASPSCR1, RCC17, UBXN9, Renal papillary cell carcinoma protein 17, UBXD9, Tether containing UBX domain for GLUT4
Purification	Protein A/G purified from cell culture supernatant.
Endotoxin level	Please contact with the lab for this information.
Accession	Q9BZE9

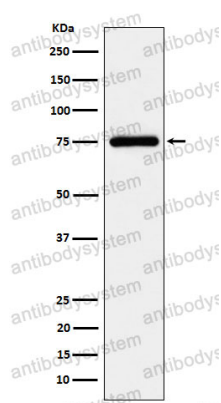
Stability and Storage

Use a manual defrost freezer and avoid repeated freeze thaw cycles. Store at 4 °C for frequent use. Store at -20 °C for twelve months from the date of receipt.

Note

For research use only.

Data Image



Western blot

Western blot analysis of TUG expression in K562 cell lysate.