

Anti-NAT10 Antibody (R2R28)

Summary

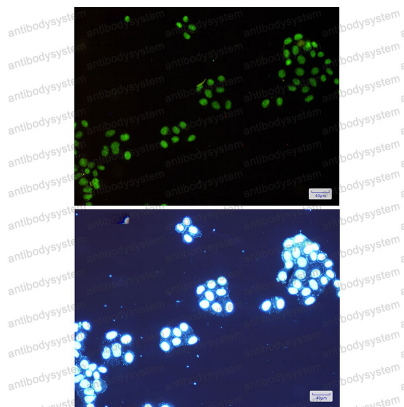
Catalog No.	RHN75601
Clone ID	R2R28
Host species	Rabbit
Tested applications	IF: 1:50-1:200, IP: 1:20, WB: 1:500-1:1000
Species reactivity	Human, Rat
Form	Liquid
Storage buffer	0.01M PBS, pH 7.4, 0.05% BSA, 50% Glycerol, 0.05% Sodium azide.
Concentration	1 mg/ml
Purity	>95% by SDS-PAGE.
Clonality	Monoclonal
Isotype	IgG
Applications	IF, IP, WB
Target	ALP, 18S rRNA cytosine acetyltransferase, hALP, N-acetyltransferase-like protein, NAT10, N-acetyltransferase 10, KIAA1709, RNA cytidine acetyltransferase
Purification	Protein A/G purified from cell culture supernatant.
Endotoxin level	Please contact with the lab for this information.
Accession	Q9H0A0

Stability and Storage

Use a manual defrost freezer and avoid repeated freeze thaw cycles. Store at 4 °C for frequent use. Store at -20 °C for twelve months from the date of receipt.

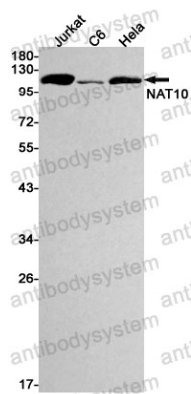
Note

For research use only.

Data Image

Immunofluorescence

Immunocytochemistry analysis of NAT10(green) in HeLa using NAT10 antibody, and DAPI(blue)



Western blot

Western blot analysis of NAT10 in Jurkat, C6, HeLa lysates using NAT10 antibody.