

Anti-SEN2 Antibody (R2R18)

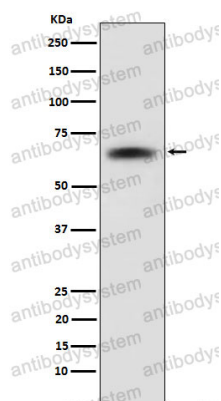
Summary

Catalog No.	RHN74801
Clone ID	R2R18
Host species	Rabbit
Tested applications	IF: 1:50-1:200, IHC: 1:100-1:200, WB: 1:1000-1:2000
Species reactivity	Human
Form	Liquid
Storage buffer	0.01M PBS, pH 7.4, 0.05% BSA, 50% Glycerol, 0.05% Sodium azide.
Concentration	1 mg/ml
Purity	>95% by SDS-PAGE.
Clonality	Monoclonal
Isotype	IgG
Applications	IF, IHC, WB
Target	Senrin-specific protease 2, Axam2, SENP2, Smt3ip2, SMT3-specific isopeptidase 2, Senrin/SUMO-specific protease SENP2, KIAA1331
Purification	Protein A/G purified from cell culture supernatant.
Endotoxin level	Please contact with the lab for this information.
Accession	Q9HC62
Stability and Storage	Use a manual defrost freezer and avoid repeated freeze thaw cycles. Store at 4 °C for frequent use. Store at -20 °C for twelve months from the date of receipt.

Note

For research use only.

Data Image



Western blot

Western blot analysis of SENP2 expression in 293T cell lysate.