

Anti-TAB3 Antibody (R2R15)

Summary

Catalog No.	RHN74601
Clone ID	R2R15
Host species	Rabbit
Tested applications	IF: 1:50-1:200, WB: 1:1000-1:2000
Species reactivity	Human, Mouse
Form	Liquid
Storage buffer	0.01M PBS, pH 7.4, 0.05% BSA, 50% Glycerol, 0.05% Sodium azide.
Concentration	1 mg/ml
Purity	>95% by SDS-PAGE.
Clonality	Monoclonal
Isotype	IgG
Applications	IF, WB
Target	MAP3K7IP3, Mitogen-activated protein kinase kinase kinase 7-interacting protein 3, TGF-beta-activated kinase 1-binding protein 3, NF-kappa-B-activating protein 1, TAK1-binding protein 3, TAB3, TAB-3, TGF-beta-activated kinase 1 and MAP3K7-binding protein 3
Purification	Protein A/G purified from cell culture supernatant.
Endotoxin level	Please contact with the lab for this information.
Accession	Q8N5C8

Stability and Storage

Use a manual defrost freezer and avoid repeated freeze thaw cycles. Store at 4 °C for frequent use. Store at -20 °C for twelve months from the date of receipt.

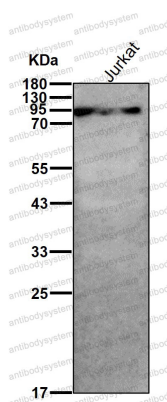
Note

For research use only.

Data Image

Western blot

Western blot analysis of TAB3 expression in HepG2 cell lysate.



Western blot

All lanes use the Antibody at 1:2K dilution for 1 hour at room temperature.