

Anti-Phospho-RPS6KA6/RSK4 (Ser232) Antibody (R2R06)

Summary

Catalog No.	RHN74001
Clone ID	R2R06
Host species	Rabbit
Tested applications	IF: 1:50-1:200, WB: 1:500-1:1000
Species reactivity	Human
Form	Liquid
Storage buffer	0.01M PBS, pH 7.4, 0.05% BSA, 50% Glycerol, 0.05% Sodium azide.
Concentration	1 mg/ml
Purity	>95% by SDS-PAGE.
Clonality	Monoclonal
Isotype	IgG
Applications	IF, WB
Target	RPS6KA6, p90-RSK 6, Ribosomal protein S6 kinase alpha-6, S6K-alpha-6, Ribosomal S6 kinase 4, 90 kDa ribosomal protein S6 kinase 6, RSK-4, pp90RSK4, RSK4, p90RSK6
Purification	Protein A/G purified from cell culture supernatant.
Endotoxin level	Please contact with the lab for this information.
Accession	Q9UK32

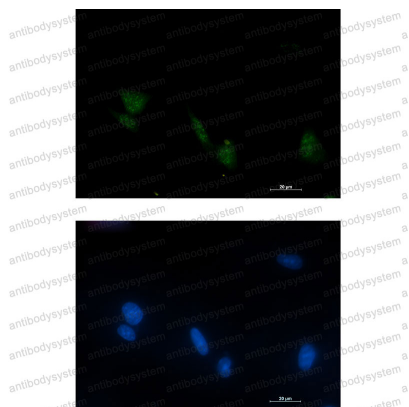
Recombinant Proteins & Antibodies

Stability and Storage

Use a manual defrost freezer and avoid repeated freeze thaw cycles. Store at 4 °C for frequent use. Store at -20 °C for twelve months from the date of receipt.

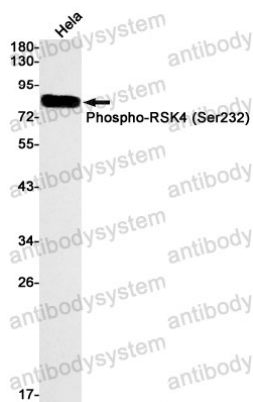
Note

For research use only.

Data Image

Immunofluorescence

Immunocytochemistry analysis of Phospho-RSK4 (Ser232) (green) in LNCaP using Phospho-RSK4 (Ser232) antibody, and DAPI (blue).



Western blot

Western blot analysis of Phospho-RSK4 (Ser232) in HeLa lysates using Phospho-RSK4 (Ser232) antibody.