

Anti-RPS6KA6 Antibody (R2R05)

Summary

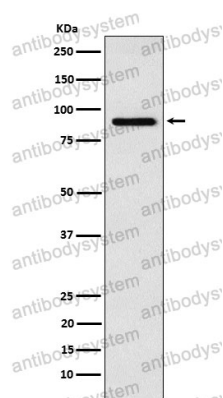
Catalog No.	RHN74002
Clone ID	R2R05
Host species	Rabbit
Tested applications	FCM: 1:20-1:100, IF: 1:50-1:200, IHC: 1:100-1:200, WB: 1:1000-1:2000
Species reactivity	Human
Form	Liquid
Storage buffer	0.01M PBS, pH 7.4, 0.05% BSA, 50% Glycerol, 0.05% Sodium azide.
Concentration	1 mg/ml
Purity	>95% by SDS-PAGE.
Clonality	Monoclonal
Isotype	IgG
Applications	FCM, IF, IHC, WB
Target	RPS6KA6, p90-RSK 6, Ribosomal protein S6 kinase alpha-6, S6K-alpha-6, Ribosomal S6 kinase 4, 90 kDa ribosomal protein S6 kinase 6, RSK-4, pp90RSK4, RSK4, p90RSK6
Purification	Protein A/G purified from cell culture supernatant.
Endotoxin level	Please contact with the lab for this information.
Accession	Q9UK32

Stability and Storage

Use a manual defrost freezer and avoid repeated freeze thaw cycles. Store at 4 °C for frequent use. Store at -20 °C for twelve months from the date of receipt.

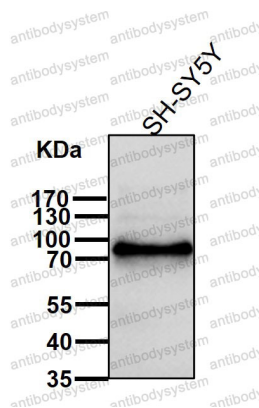
Note

For research use only.

Data Image

Western blot

Western blot analysis of RSK4 expression in SH-SY5Y cell lysate.



Western blot

All lanes use the Antibody at 1:1K dilution for 1 hour at room temperature.