

Anti-CLASP1 Antibody (R2Q96)

Summary

Catalog No.	RHN73401
Clone ID	R2Q96
Host species	Rabbit
Tested applications	IF: 1:50-1:200, IHC: 1:50-1:100, WB: 1:500-1:1000
Species reactivity	Human
Form	Liquid
Storage buffer	0.01M PBS, pH 7.4, 0.05% BSA, 50% Glycerol, 0.05% Sodium azide.
Concentration	1 mg/ml
Purity	>95% by SDS-PAGE.
Clonality	Monoclonal
Isotype	IgG
Applications	IF, IHC, WB
Target	CLIP-associating protein 1, CLASP1, KIAA0622, Protein Orbit homolog 1, Cytoplasmic linker-associated protein 1, Multiple asters homolog 1, MAST1, hOrbit1
Purification	Protein A/G purified from cell culture supernatant.
Endotoxin level	Please contact with the lab for this information.
Accession	Q7Z460

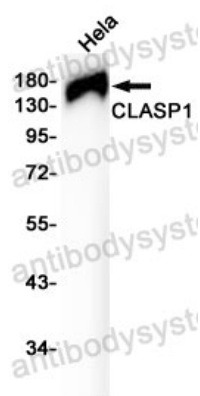
Stability and Storage

Use a manual defrost freezer and avoid repeated freeze thaw cycles. Store at 4 °C for frequent use. Store at -20 °C for twelve months from the date of receipt.

Note

For research use only.

Data Image



Western blot

Western blot analysis of CLASP1 in HeLa lysates using CLASP1 antibody.