

Anti-GCSAM Antibody (R2Q94)

Summary

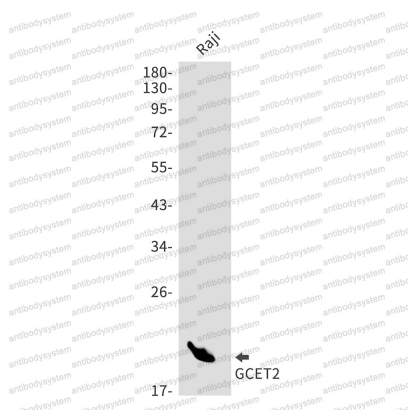
| | |
|----------------------------|--|
| Catalog No. | RHN73301 |
| Clone ID | R2Q94 |
| Host species | Rabbit |
| Tested applications | IF: 1:50-1:200, IHC: 1:50-1:100, WB: 1:500-1:1000 |
| Species reactivity | Human |
| Form | Liquid |
| Storage buffer | 0.01M PBS, pH 7.4, 0.05% BSA, 50% Glycerol, 0.05% Sodium azide. |
| Concentration | 1 mg/ml |
| Purity | >95% by SDS-PAGE. |
| Clonality | Monoclonal |
| Isotype | IgG |
| Applications | IF, IHC, WB |
| Target | Germinal center-associated lymphoma protein, GCSAM, GAL, hGAL, GCET2, Germinal center B-cell-expressed transcript 2 protein, Germinal center-associated signaling and motility protein |
| Purification | Protein A/G purified from cell culture supernatant. |
| Endotoxin level | Please contact with the lab for this information. |
| Accession | Q8N6F7 |

Stability and Storage

Use a manual defrost freezer and avoid repeated freeze thaw cycles. Store at 4 °C for frequent use. Store at -20 °C for twelve months from the date of receipt.

Note

For research use only.

Data Image

Western blot

Western blot analysis of GCET2 in Raji lysates using GCET2 antibody.