

Anti-PAG1 Antibody (R2Q88)

Summary

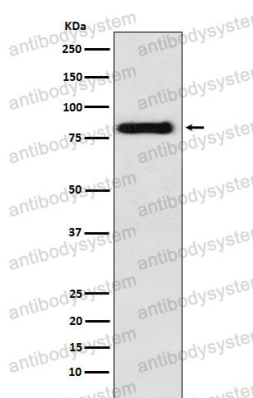
Catalog No.	RHN72901
Clone ID	R2Q88
Host species	Rabbit
Tested applications	FCM: 1:20-1:100, IHC: 1:100-1:200, IP: 1:20-1:50, WB: 1:1000-1:2000
Species reactivity	Human, Mouse, Rat
Form	Liquid
Storage buffer	0.01M PBS, pH 7.4, 0.05% BSA, 50% Glycerol, 0.05% Sodium azide.
Concentration	1 mg/ml
Purity	>95% by SDS-PAGE.
Clonality	Monoclonal
Isotype	IgG
Applications	FCM, IHC, IP, WB
Target	CBP, Phosphoprotein associated with glycosphingolipid-enriched microdomains 1, Csk-binding protein, PAG, PAG1, Transmembrane adapter protein PAG, Transmembrane phosphoprotein Cbp
Purification	Protein A/G purified from cell culture supernatant.
Endotoxin level	Please contact with the lab for this information.
Accession	Q9NWQ8

Stability and Storage

Use a manual defrost freezer and avoid repeated freeze thaw cycles. Store at 4 °C for frequent use. Store at -20 °C for twelve months from the date of receipt.

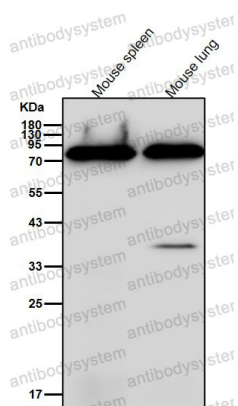
Note

For research use only.

Data Image

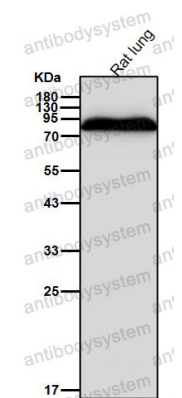
Western blot

Western blot analysis of PAG expression in Raji cell lysate.



Western blot

All lanes use the Antibody at 1:2K dilution for 1 hour at room temperature.



Western blot

All lanes use the Antibody at 1:2K dilution for 1 hour at room temperature.