

Anti-PSENEN Antibody (R2Q87)

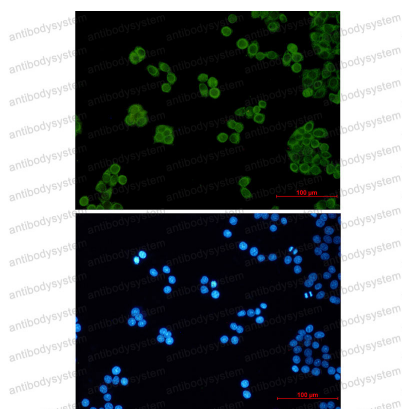
Summary

Catalog No.	RHN72801
Clone ID	R2Q87
Host species	Rabbit
Tested applications	IF: 1:50-1:200, IHC: 1:50-1:100, WB: 1:500-1:1000
Species reactivity	Human, Mouse, Rat
Form	Liquid
Storage buffer	0.01M PBS, pH 7.4, 0.05% BSA, 50% Glycerol, 0.05% Sodium azide.
Concentration	1 mg/ml
Purity	>95% by SDS-PAGE.
Clonality	Monoclonal
Isotype	IgG
Applications	IF, IHC, WB
Target	Gamma-secretase subunit PEN-2, Presenilin enhancer protein 2, PSENEN, PEN2
Purification	Protein A/G purified from cell culture supernatant.
Endotoxin level	Please contact with the lab for this information.
Accession	Q9NZ42
Stability and Storage	Use a manual defrost freezer and avoid repeated freeze thaw cycles. Store at 4 °C for frequent use. Store at -20 °C for twelve months from the date of receipt.

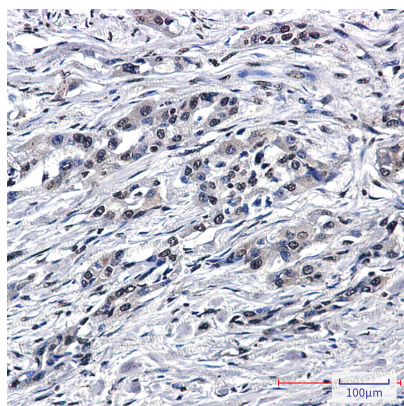
Note

For research use only.

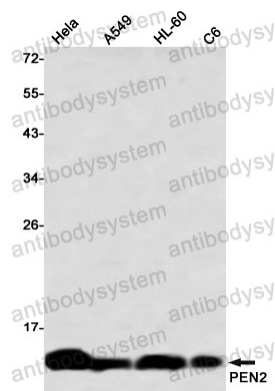
Data Image

**Immunofluorescence**

Immunocytochemistry analysis of PEN2 (green) in Hela using PEN2 antibody, and DAPI (blue).

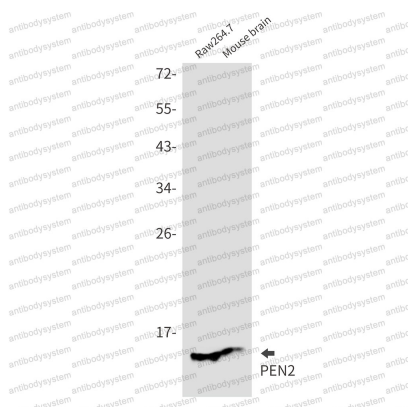
**Immunohistochemical**

Immunohistochemistry analysis of paraffin-embedded Human lung cancer using PEN2 antibody. High-pressure and temperature Sodium Citrate pH 6.0 was used for antigen retrieval.



Western blot

Western blot analysis of PEN2 in HeLa, A549HL-60, C6 lysates using PEN2 antibody



Western blot

Western blot analysis of PEN2 in Raw264.7, mouse brain lysates using PEN2 antibody.